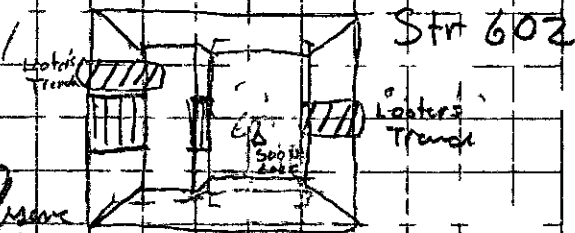


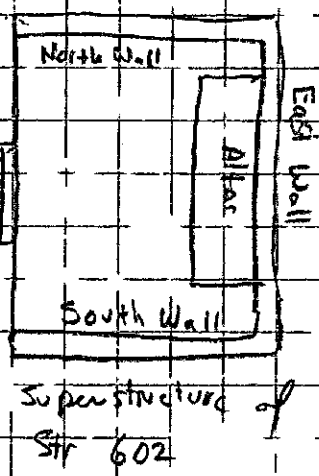
Str 602 is the largest temple in Group A (See the Map of Group A). The structure has a superstructure and a lower tier on the west side. Leading up to both of these features is a stairway. Our plan is to clean the stairway, superstructure and lower tier, thereby exposing the architecture. We are excavating in 1x1 m units so that we can observe the distribution of artifacts. We laid out the grid and are now excavating.



I have made an excavation form. The purpose of the form is to ensure that students working for me gather the maximum information of need regarding depths and horizontal distribution. The forms describe groups of 9 (3x3) units. I used this format in my notes in the past and it worked really well. Students will fill out these notes and I will direct the excavator to take general notes.

The datum <sup>(vertical)</sup> was arbitrarily set at 4.5 meters above station 8 (a station from the 1994 survey). This point is generally 80-90 cm above the present surface of the superstructure. The horizontal datum was also arbitrarily set. A point is the center (well, slightly to the south) of Structure 602 was arbitrarily set at 500N, 600E.

To the right of note the descriptive terms that I will use to describe location within the building. There are other features such as columns that I think I can see, but for now we will use these features that are easily visible. Note that I do not know if the altar was an altar, but I will refer to it in that manner.



Str. 602

TP

July 10, 1996

We are using  $\frac{1}{8}$ " screen for these excavations. Actually some of the screens vary - some parts are  $\frac{1}{16}$ ".

## Level 01

See the Group Forms for specific depths. This is the humus layer. We are finding a few (but not many) cool artifacts like figurine incensario sherds, shell, crystal, and painted plaster. I think the inside of its structure was red.

In Group 503, 600 we encounter a concentration of incensario sherds, esp. in 502, 599 and 503, 600. There are also figurine incensarios and one larger than those in Str. 605. It could be that we have differences in incensario types between the two structures.

Important Note: There are a lot of flat (squares?) stones west of the 599E line. They are on the surface and must have faced the flat (west) wall or the circular wall. I think they are part of a colonnade that collapsed. The colonnade appears to have been in 499, 599.

## Level 02

We have now begun to remove damaged portions of Level 02 the collapse layer that rests on top of the floor and the walls. We found the floor in front of the "alter" but it is undulating and extremely fragile. It is also blackened.

We were working in 504, 601 and the interior wall of in that area the wall is slightly distorted. I noticed that the plaster floor was under the stones of the distorted wall. I thought what I was seeing, but this part of the wall if it was a part of the collapse that looks like the wall I saw several feet of it, but in reality, the floor predates the interior wall. In fact I really wonder whether this thing is a wall! It may be some sort of plaster. Note that the interior wall went to at least the 504N line if not further south. What this means in the interior wall was built after the floor. We found a small cache of chert in 504, 603. It was composed of two chert lances/knives. These were found directly below a chert object (possibly) in level 01. I made a cache form (with optimistic intent) and this is cache 1. I do realize that I imply function here, but just take it as a field interpretation. I have a feeling that we are going to have to quit the altar.

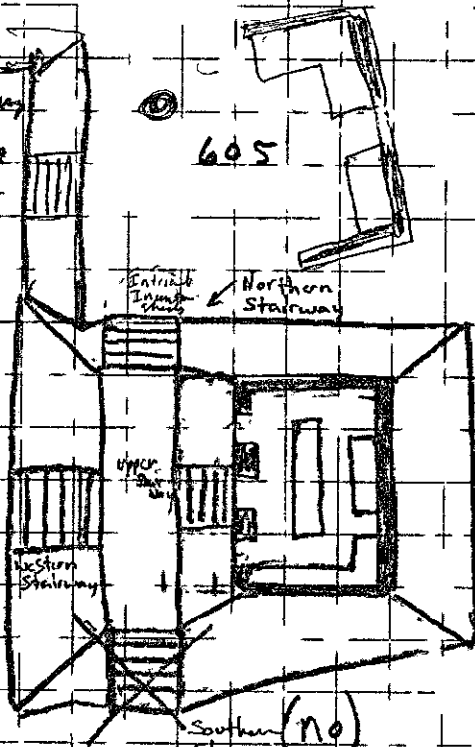
Str. 602

TP

7/18/96

Level 01 cont

It now appears that Str 602 has two adjacent stairways. One goes to the north into the platform of Structure 605 and the other goes to the south. The one to the south is just a theory at this time, but I am fairly certain of the one to the north if we imagine the lower tier of the structure to have had stairways, then we can see a rise to



to east which signifies its favored location. To the north the stairway goes down on a platform which is higher than the areas to the south & west. To the south, the stairway goes down on a very low platform. To the west the stairway descends on the plaza.

Level 02 cont

7/19/96

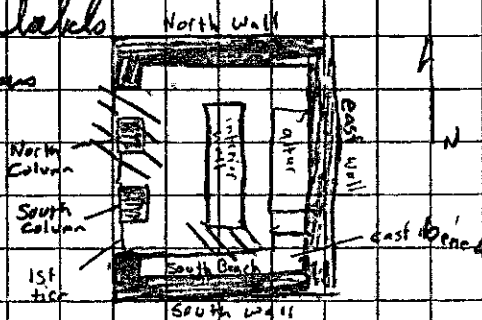
If you are wondering why we are continuing both level 01 & 02, remember that we have completely level 01 in some areas, but not others.

Note that at the base of the northern stairway of the lower tier of Str 602 (on the platform of 605) we encountered a deposit of small unexcavated shrubs, but they were very detailed (even more so than the larger excursions). This is interesting because we have three types of excursions: The small more figure type in Str 605, the large figure excursions in 605, and small intricate human figure excursions at the base of this stairway.

## Level 02

We have almost finished the center of the superstructure & just need to finish cleaning up north & south walls and the NW corner. Next we will move to the lower tier. We have just begun level 02 on the north side of the lower tier. To the right is a sketch of the superstructure of Str. 602 with all the labels used to identify spatial locations.

I have also noted when incense shades are highly concentrated



Str. 602  
Superstructure sketched

/// = concentration of  
incense shades

As we started the second tier there was a high concentration of plaster in 506, 597. I think it might be from a plaster facade. We will collect this material in case it forms an image. Many of the pieces are flat so this is a possibility.

Note that many of the stones of Str. 602 (especially those of the columns & stairways) are cut stones. Whether they were looted from Classic Period buildings or cut by the PC people is a matter of speculation.

We are finding a lot of shot glass shaped vessels. As of 7/19/96 we found two whole & two partial vessels on the superstructure of Str. 602.

## Level 02

We removed the collapse from the southern bench, we were able to find the western wall & the western end of the south bench, but we cannot find the south wall. There are large limestone on a hill, but they are not in their original position & it would appear that the south wall collapsed entirely.

As we continue the excavation of the northern stairway of the lower tier we have discovered another concentration of artifacts. We have found two <sup>small</sup> <sup>ocean</sup> shells that have been preserved to form a pendant. Yes, there are only two, but they are the only one discovered so far. There was also a jade bead at the base of this stairway.

## Level 02

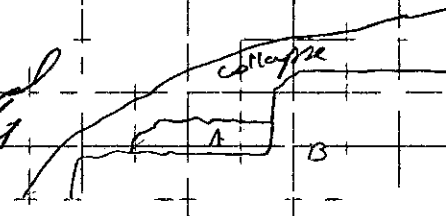
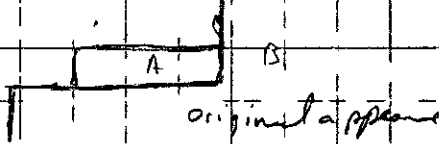
We encountered some minor problems while excavating the second floor on the northwest corner of the structure. This is in groups 506, 597; 509, 597 and 509, 560.

We remain in the collapse and I learned a lesson which I bring in every but had not experienced while excavating major architecture. There was an addition to the structure. A low tier slab led from the north stairs to the

center of the western end of the building (A).

This was built on the original structure (B).

(A) was totally destroyed and I originally thought it was collapse.



It appears that (A) is not a really nice addition to the structure. In fact, I do not think that it was covered by very much stucco. It almost looks as if it was a component that was not completed. Portions of B that are adjacent to A have stucco, but the latter does not. This is especially true with the upper west stairway.

Zacpeten

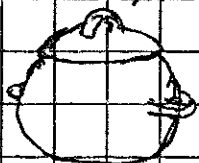
Str. 602

TP

July 24, 1996

### Cache 4

We found a cache 15 cm west of the altar in structure 602. This was the medial cache as it appears to be aligned with the middle of the altar. The cache



included a single vessel that had a lid & little handles. It was otherwise nondescript except that it had cool stuff inside of it. Cool stuff means jade & other objects and a metallic substance that must be mercury.

The vessel was found on level 04, but it must have been placed there by persons inhabiting level 03 (the floor) I suspect that level 3A - the plaster cap that also above cache 2 - would have originally extended to this point.

The handles of the vessel were oriented north/south. See the level 04 Group 503, 603 for more details on the removal of this vessel.

I suspect that caches 2, 3, and 4 are related. Cache 2 is a lid of a similar vessel, but it is worn. I suspect that it was either removed during a termination ritual or the placement of cache #4 disturbed it. Alternatively, both events may have occurred.

Cache 3 could have been cached along with cache 4. It could have been disturbed by the placement of cache 4. Or it might simply have been accidentally included in the basket used to fill cache #4 (as these little shards are found above the floor). Take your pick.

Note that there appear to have been 2 (or more) medial caches. It is possible that one was associated with level 3B & the other with 3C.



Zacpeten Str. 602

Cache 4

TP

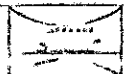
1/31/97

### The Removal of the Cashed artifacts

Several objects could be seen within the vessel upon removing the lid. I excavated the vessel and mapped the distribution of each object (see plan #1). I did not record the depth as I could not think of a method precise enough. I estimated the depth to be nearest .25 cm (some of the objects were this far apart). You will note that there was not very much soil in the cache. The soil was a grayish soil that was grey, but there were specks of reddish brown material in it, as well as shells. The objects recovered were as follows (again, see Plan #1).

#### Object

- 1 greenstone tubular bead (incised)
- 2 greenstone bead (with incised circle)
- 3 greenstone bead
- 4 greenstone flat object
- 5 greenstone bead
- 6 stone bead
- 7 bone bead
- 8 greenstone bead (very small)
- 9 foil metal fragment (copper/gold)
- 10 greenstone circular bead (pendant)
- 11 foil metal fragment (copper/gold)
- 12 jade bead/pendant
- 13 bead (bone?)
- 14 greenstone bead.
- 15 very small greenstone pendant
- 16 quartz crystal (small fragment) (not mapped)
- 17 thorn/corn/may cypress? (not mapped)
- 18 shell fragments (not mapped)



Once the objects of soil were removed, I could see that there was residue in the bottom of the vessel (located in the northern half). It appears as concentric rings of residue surrounding an inner mass (See Plan #2) An inner mass was a light yellowish brown material that had a circular depression in it (possibly for a pebbled object). Surrounding this mass was a very light yellow residue which was in turn surrounded by a brown residue. To the south of these materials was a carbon residue.

— Something was burned here I think the carbon residue is from the combustible used to ignite a material at the other residues are the material itself — it was probably copal.

Note that the artifacts dist. is correlated with that of the residue. I can think of two scenarios

1. something (copal) was burned and these objects were thrown on on top.
2. the objects were embedded in the copal.

Note that many of the objects were damaged by the fire.

Be sure to note that there are spots of red paint inside the vessel — fingerprints?

Zacpeten

Str. 602

Cache #4

S/13/97

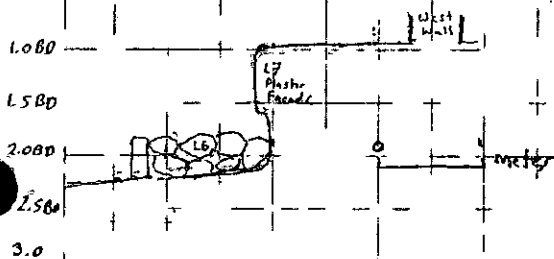
After washing the vessel for a photograph, a couple of interesting observations were made.

First of all, below the yellow residue within the vessel was an area of disintegrated ceramic which almost passed through the vessel. A crack extends from this point, at the base of the vessel, to its rim. The yellow residue was largely composed of disintegrated ceramic. Now, however, the question of what chemical process disintegrated this part of the vessel remains to be answered.

Second, a portion of the <sup>interior</sup> edge of the vessel lid was charred. The charred area was 1.5 cm wide, and the arc 13.5 cm. This charred area originally lay above the charred area within the pot. It appears, therefore, that the lid was placed on top of the vessel while the combustibles within it were still burning.

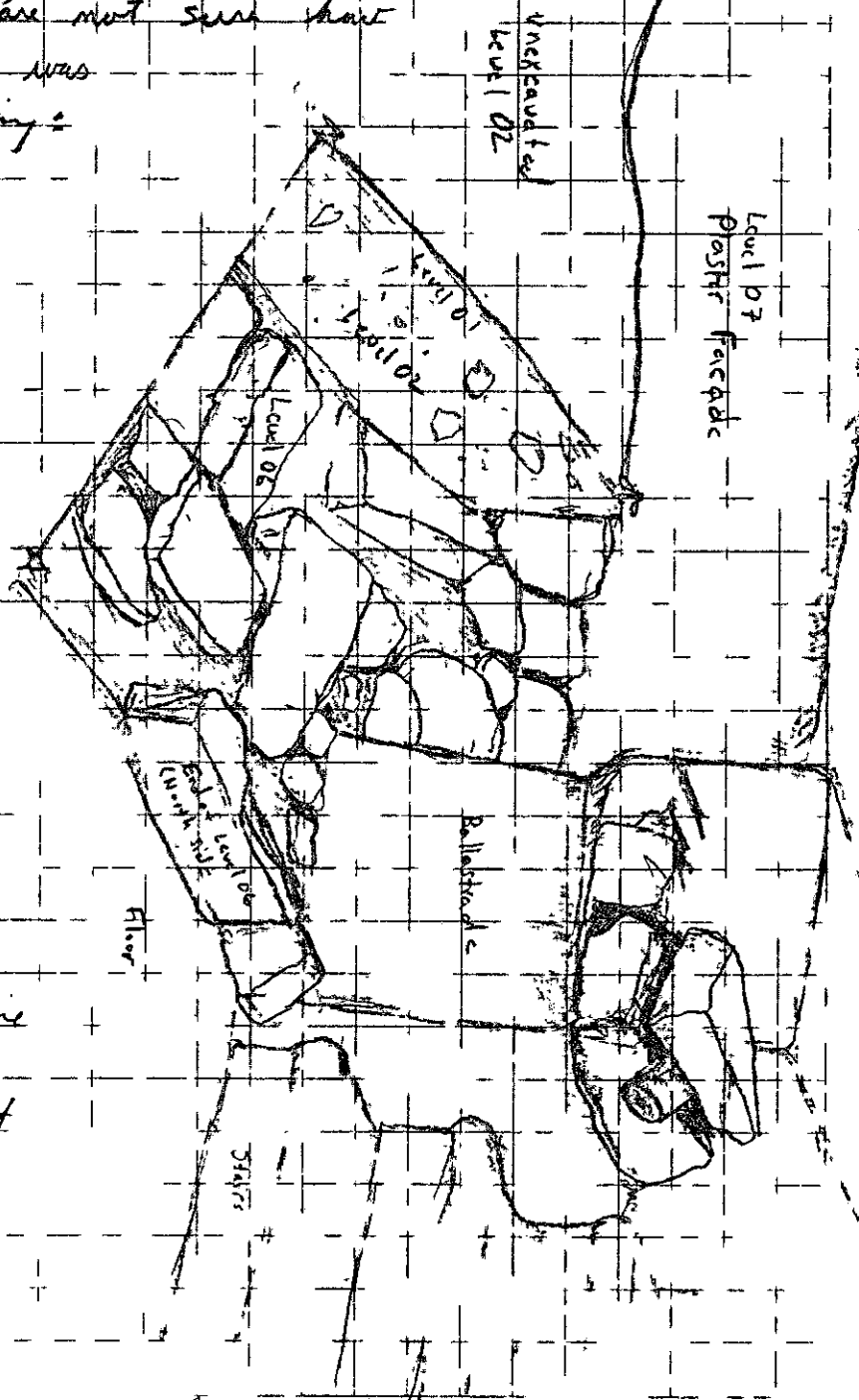
One might speculate that it was then placed in the earth to burn for eternity (but like the refrigerator light...).

As noted, when we removed the collapse (level 02) on the north half of the substructure of Str 602, we encountered two construction phases. One was designated as level 07. This is a nice plaster facade of an earlier construction of the top of this facade the plaster curves thereby showing evidence of molding. We are not sure how but the molding actually was but I suggest the following:



The molding also occurs on the ballastade of the upper stairway, but I do not know (at least not really) how but the molding was that stain is also slightly molded.

Level 06 ends at the line of the south side of the northern ballastade. Part of the ballastade lies below level 06, but the stain of the part of the ballastade above level 06 were used by the



people who constructed level 06. The thing is — level 06 was really shabby compared to level 07. If there was stress here, it should still be here because the stress of the part of level 7 that rose above level 06 has survived. It is not possible that level 06 was entirely covered level 07 because there is hardly any collapse to the west of level 07.

Note that the shape of level 6 at 7 and their relationship on the north wall is different from that just described for the west wall. I will describe this later.

Zacpeten

Str.

602

Ground Notes

7/30/96

In reality we have begun our test pit in Str. 602. It will begin as a 2x3 with the following units:  
 After a meter or so we will convert to a 2x2. Later we will convert to a 1x1.

502	502	502
599	600	601
501	501	501
599	600	601

This is to insure the safety of the excavation. It is suspected that the 2x2 and 1x1 will be located in the westernmost units.

I will continue to record in 1x1 meter units because it is fairly simple to fill out the forms; however, I may change to a 2x2 unit if we are pressed for time. It is also possible that I may use a 1x2 if time starts to get short.

— Remember I only have 10 days of excavate left.

The excavate of the northern stairway continues and as we remove most of Level 02, it looks better and better. I can observe 7 stairs but I suspect that there were originally 10-11 — if the stairway led to the top of Level 06 (the addition). It appears that this is the case. It is possible that this stairway was part of the same construction event. However, it is not as poorly constructed as Level 06.

The ballastbeds of this stairway are almost totally destroyed. The only thing that remains are flat rocks. It is interesting that they may have faced the ballastbeds.

At the base of the stairway, is a plaster surface which is the surface of the platform of Str. 605.

It forgot to note that the area where this stair meets Level 06 is now occupied by a large tree. We will be unable to determine the relationship of the two constructs, but hopefully we will have better luck with the south stairway.

Well... I have a few more things to say about the northern stairway of structure 602. First of all, note that some of these units are designated as Str. 605. There is nothing too weird about here because the unit numbers will tell all... So... chill out man! Besides... are stairways not a limited zone between here and there? Who is to say which is Str. 605 and which is 602? It's obvious, of course! Just remember that I have drawn in a lot of things. By the way... I have gripe today - can you tell?

Remember that quite a few of the smaller mosaic heads/insensuous heads have been found here. This is because stairways are sacred areas. There is probably a cache and had somewhere. But there is more we have found several beads (jade and otherwise), shell pendants, and one or two jade objects here. Remember that to the east of the eastern ballastone (< 75cm) we encountered the sheets of two red slipped vessels - one of which was the same type of vessel as was found in the small cache in front of the altar. I see two or three alternatives here. First of all, caches in the wall of the structure might have collapsed into this area. Second, a cache might have been located somewhere and was collapsed or smashed by the collapsing wall. Third, caches were deposited from the top of the temple, or slightly below (I doubt this because who would waste the gods?).

Another interesting point is that the beads were found in level 01 (collapse), but not in level 02 (collapse), and a pretty sure about this, if this is true then the beads must have eroded from a higher area after the collapse occurred.

Zacpeten

General

7/30/96

While I am speculative, let me note the known characteristics of the Kowak (because I find some more)

1. High Frequency of Topyote pottery
2. Human Figure Incense Burner (let this us for Toluca) (see)
3. Mayapim-style temple assemblies
4. Temple of temple assembly is located on the eastern side of the plaza and faces west (see <sup>McClintock</sup> 1923: 164)
5. Multiple small platforms lined up on the temple (Johnson <sup>see</sup> 1923: 164)
6. "Lack of interior spaces" in colonnaded halls (Johnson <sup>see</sup>)
7. Only one (interior) gallery of columns in colonnaded halls (see Johnson)



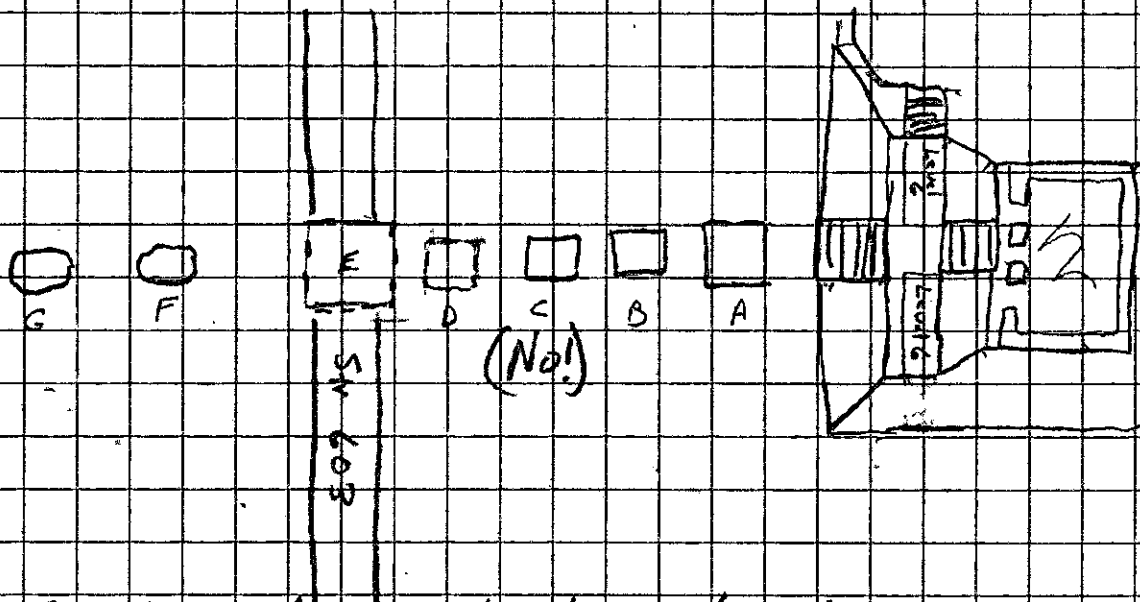
Zacpeten

Str 602

7/30/96

Level 06 cont

Remember that level 06 is the poor construction that



leads from the north-south stairway to the center of the lower tier of str. 602 (compare the west-south upper stairways, etc). I would like to speculate on this a bit.

Note the shrines (Especially str. 607) to the west of str. 602 (we will remember these shrines). Note that A-E (the last two are very probable, but...) are nice square structures made of cut (?) stones. Then note shrines F and G. These are just piles of rocks that are not even square. Do you see a connection here? It seems that someone was building here that could not really do a good job, BUT... the same traditions are being continued. This is based on my idea that the construction of the shrines went from east to west perhaps according to some actual family (man and really want to dig those things up, but I will have to wait).

Note that Kamela sees evidence for spitting construction in Str. 601 too.

Zacpeten

Str. 602/605

July 31, 1996

### More on the North Stairway

As you have probably heard, we found a <sup>small</sup> piece of gold foil on the north stairway. This is cool, of course, but... it does create some problems to be solved. I have already noted that numerous beads have been found in this area — including one made from a human tooth.

We also found numerous <sup>thin</sup> pieces of cut shell (ocean?) that look as if they might have once been fitted into a mosaic. The thing is, — there must be a look cache nearby. I really do not think it is likely that someone simply threw these objects (especially the gold) down the steps. I think there must be a cache in the stairway and it is possible that these objects came from it. Of course, they might also have come from whatever caused the concentration of red slipped shells in 509, 598 (Level 02).

At any rate, I have decided to excavate two additional units to the east of the ballcourt 510, 598 and 511, 598 and I am definitely going to excavate the stairway. The problem is that I have to excavate it without totally destroying it (more that takes the fun out of it!).

August 1, 1996

We found another small piece of gold foil in 511, 598 Level 2. We also found a "bit-heap" of numerous shells (with small ones) with red slip. 510, 598 <sup>Level 2</sup> I suspect that there is a small attached shrine in 510, 598. See the level notes.

August 2, 1996

It appears that there is no further stairway. There is just a wall here.

Zacpete

Str. 602

SW corner base of Level 2

The SW corner of Str 602 was interesting because 2m to the east of the corner was a strange arrangement of walls - I figured from a trench corner. First wall "A" to the north was constructed. The wall appears to have been the retaining wall for the south part of the lower platform of Str. 602. "B" is

subsequent wall because it is sloped downward as one moves from north to south.

This could be because of erosion or it could be a stairway (I doubt this) or a buttress for wall "A". If it is a crooked stairway it is very odd. I guess it could be a

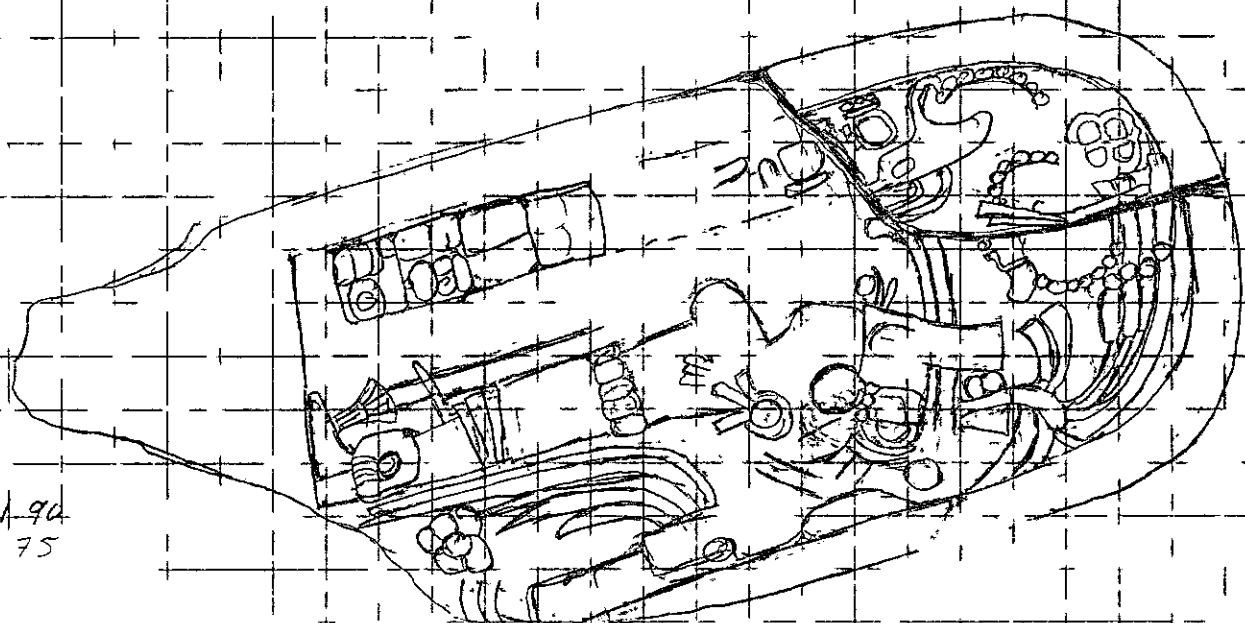
stairway but to where I do not know. Note that "B" was built after "A". Next, wall "C" was constructed and its easternmost part touching Wall "B".

Then wall "D" was constructed



I have been quite busy for this day because I inherited Remulos' work & I have not written very much.

I was excavating in Str. 601 along the basal (eastern wall) in the center of this wall we excavated a stela with a standing figure in profile. Below the figure are also glyphs in front of the figure. <sup>sub-structure</sup>



190  
75

Well... this is just a sketch, but you get the idea... At first I thought it was a shell or a staff but, I don't think that this is just something but from its look that it is the stela is embedded in the wall. We found some evidence of stela to the east of the stela, but we also found a layer of eroded plaster. This stela may have been covered with plaster during the PC period.

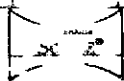
Not that it is 190 cm long and 75 cm wide. We have photographed this number times and are in the process of making a profile of it.

Zacpete

General Notes

2

wall with the stela in place, but this drawing will  
not include detail of the carving. We are going  
to hire an artist as well as a professional photographer  
to photograph <sup>and draw</sup> the stela with greater detail.



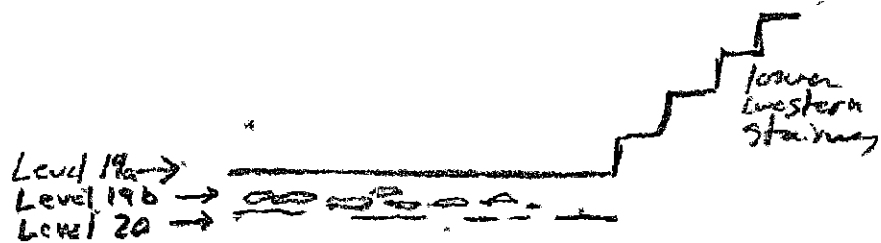
Zacpeten

Str. 602

TP

Sept 29, 1997

When Boyer excavated in front of the lower  
stairway, he did so in a very confusing manner.  
In the report, I will refer to the plastic  
surface that lay in front of the lower  
western stairway as Level 19a. The fill  
including the sheet concreted will be  
called 19b. At the subsequent fragmented  
plastic surface, Level 20.



2/24/99

TP

Zacpeten

Str. 602

For some reason or another, I forgot the notes for Str 602. Therefore, I will write a few notes here concerning the excavation of the portion of the west wall south of the lower central stairway. I will note here the levels below datum of level 01 (and the top of level 02) for several units in Group 497, 594.

496	496
592	593
495	495
592	593

p020 #

578	55
405	350

base level 1

6252	6253
6254	6255

Lote #

As I noted in the group 497, 594 notes, I am searching for a point at which the west wall takes a slight turn to the east. I think that this corner occurs in 496, 593 for the upper (2nd tier) and possibly in 495, 593 for the lower tier.