



"Rite in the Rain®"

ALL-WEATHER

LEVEL

Notebook No. 311



Recyclable

"Rite in the Rain" - A unique All-Weather Writing paper created to shed water and enhance the written image. It is widely used throughout the world for recording critical field data in all kinds of weather.

Available in a variety of standard and custom printed case-bound field books, loose leaf, spiral and stapled notebooks, multi-copy sets and computer papers.

"Rite in the Rain" All-Weather Writing Papers are also available in a wide selection of rolls and sheets for printing and photocopying.

a product of

J. L. DARLING CORPORATION
TACOMA, WA 98421-3696 USA

Zaspetch
 Str. ~~1916~~ 605
 Excavation
 Notes

-Tim Pugh-
 -1995-



56 Str. 605

See page 14 first CONTENTS

PAGE	REFERENCE	DATE
	Level 01 - humus layer grey brown to dark grey brown humus with small < 5cm diameter inclusions	
	Level 02 - collapse layer limestones in a matrix of grey brown soil	
	Level 03 - fill overlying hollow spot in 107, 201. Grey to grey brown soil with small to medium sized limestone inclusions	

In these notes, the structure
is often referred to as
Str. 56. It is not
Str. 56, it is ...
Str. 605

Name _____

Address _____

Phone _____

Project _____

Yellow Polyethylene Protective Slipcovers (Item #31) are available for this style of notebook.
Helps protect your notebook from wear & tear. Contact your dealer or the J. L. Darling Corporation.



INCHES

See page 14 first

Group 103, 203 Level 01 TP

7/27/95

This group rests on top of the
sandstone "arm" of the C. The
soil of level 01 is a gray brown
to dark gray fine shales with
small limestone nodules. We
are removing this layer to
expose the wall, collapse,
a ballast - well see

103	103	103
201	202	202
102	102	102
201	202	203
101	101	101
201	202	203

Open

70	68	70
75	67	63
76	67	62

Closing

89	75	78
92	82	76
95	74	59
	71	67

Group 103, 206 Level 01

7/27/95

This was the revised shales level
taken off of Group 103, 206. In unit
101, 206 we encounter a line of stone
30m from the red edge. ^{Open}
east of these stone there is a 10m
dip before ballast/collapse in encounter
associated with this will was a
concentration of concave shales
(see the plan)

Open

67	64	70
62	60	85
57	56	83

Closing

78	67	79
69	60	82
65	69	85

Group 106, 203 Level 01 TP

This is summer cover the geline of the structure. Note that all the points on 201 N is the westernmost line of units, but if they add more of time allows it and even more likely to add a column to the north.

106	106	106	106
201	202	202	203
105	105	105	
201	202	203	
104	104	104	
201	202	203	

Opening Depth

71	64	65
68	70	65
71	67	67

Closing Depth

84	71	69
94	75	73
92	75	75

Group 106, 206 Level 01 TP

This is summer covering the east wall (the 206 F units) and covering collapse of floor in the rest. Note that no units were received on 104, 208

106	106	106
204	205	206
105	105	105
204	205	206
104	104	104
204	205	206

Opening Depth

61	63	76
65	62	64
65	65	71

Closing Depth

66	64	77
74	68	64
74	63	72

July 29, 1995 General Notes

Level 01 has proved to be entirely for general use. First of all, there are a lot of incenseburn stands in comparison to Sta 55. We have several head stands, axes, legs, a human face, and various unbrann fragments. In addition, we are finding a lot more lithics than found in Sta 56. These include lance blades, fragments. The only other place in this site that I have found such objects was in the defensive system on the northern part of the peninsula. We are also finding pieces of coch shell (Coccar shell) and turtle shell (or is it human skull?).

Two possible points were found today. One was really small and had to be an arrow pt. The other was small, but could be the point of a spear. None. This area more or less suggests over a hunting.

Group 103, 203 L. level 02 TTP

Group 103, 203 comprises the south wall. As always, level 02 is collapse. Note that most of the 101N units probably went a little deep - there was no flow line. Unit 201, 203 when little deep

(about 5 cm) and we hit another wall running east-west, perhaps another structure. See p 15. A unit 101, 201 we hit a hollow spot in the SE corner of the unit. See the plan view.

of the base of level 02. I looked in the hollow spot and could observe the edge of a line of stones. It's sorry but I have to investigate these features. See level 03 (Unit 101, 201).

103	103	103
201	202	203
101	102	102
201	202	203
101	101	101
201	202	202

Opening		
89	75	78
92	82	84
	118	54
95	71	67

Closing		
MM	84	89
93	89	85
102	90	98

Group 103, 806 Level 02

This was the collapse level on top of both the east and south walls. Note that in 103, 206 we removed what we thought was collapse but it was actually wall fill that had the slab suspended from. Between the slabs behind the east wall is an rubble platform. The thing that is causing the problems, but wall from it end

103	103	103
204	205	206
102	102	102
204	205	206
101	101	101
204	205	206

opening

78	67	74
69	60	71 107
65	69	77 106

Closely

87	86	103
87	86	103
87	86	103
90	87	115

Group 106 203 Level 02

This is the collapse layer in the panel part of the structure. The unit 104, 203 we received what appears to be part of a stringer. Spent all in a small fragment, but it adds to the string collection of outposts found in this structure.

106	106	106
201	202	203
105	105	105
201	202	203
104	104	104
201	202	203

opening

84	74	69
84	74	69
72	75	73
92	75	85

There is only a trace in the 201E

units of this group which may have originated as unputat glass as there are several stones around, but a dirt trace of it has created a distinct stain.

Closure

76	80
N	50 79
N	85 81

Not that no plan was executed in this area

Group 106, 206 Level 02

The group rests on top of the east wall. We encountered a piece of bone with a glyph and in 109, 206 - but it was just a fragment. It appears to be buried on one side. I think what it is a date because dots and bars can be made out.

There are two glyphs - only one of which seems to be a glyph (the upper one) but I don't know what it is.

106	106	106
204	205	206
105	105	105
204	205	206
104	104	104
204	205	206

66	67	68
74	72	69
74	63	72

80	66	118
81	65	80
82	81	81

July 31, 1995 General Notes

Wall this buddy is quite interesting despite its small size, it is more difficult to examine than STK 55. I don't know why the preservation of the floor is much better in this structure. The walls are a little more difficult to follow but things are going well.

We have a piece of stringy green which suggests blood-letting ritual. There is a lot of cream shell which appears to be cut and worked, but at this point, I am not sure what this material represents. I do not know.

We also have three white arrow points and half of another as well as pieces of dark chert which appear to have been thrown or thrown. Add to this the turtle shell and the numerous pieces and we have a collection of artifacts whose association I do not understand.

Group 109, 203 Level 01 TF

August 1, 1985

Although we may never find the
I am adding two more groups

go what we can see what we can
see more details. I am pushing
my team limit but this is too
good to pass up. We may only
have 108 N and 107 N in there

Two groups

Group 109, 203 lay in the
point of the structure - 200 lbs
planned for the exact location

109	109	109
201	202	203
108	108	108
201	202	203
107	107	107
201	202	203

Open

53	54	56
59	60	61
66	61	59

Closing

X	X	X
X	X	X
73	65	67
76	67	70

Group 109, 206 Level 01 TF

This group needs a stop
of the east wall. We are
adding what appears to be
human bones in 108, 204, but
I am not sure. Some of the
bone in the structure has led
the appearance of human bone
but nothing really definite (to
me) yet.

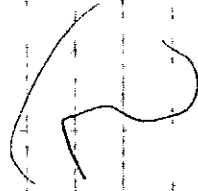
109	109	109
204	205	206
108	108	108
204	205	206
107	107	107
204	205	206

Opening

57	65	79
59	67	80
60	62	82

Closing

X	X	X
X	X	X
63	70	82
70	76	88



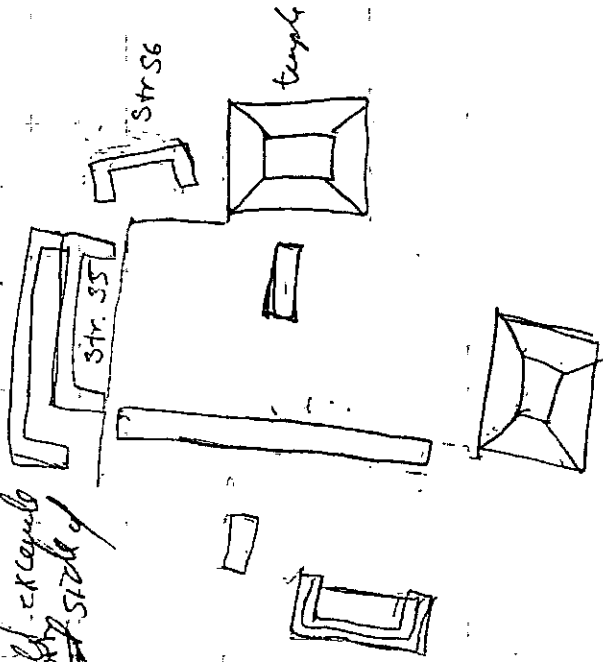
General Notes August 1, 1995

I guess I should have noted earlier that the purpose of the excavation here is to clean the east of of

Structure 56 and observe the distribution of all back-south floor of the structure and observe the layout of other structures.

The grid is oriented 30° east of north. I thought this was the orientation of the structure when I lay in the grid, but as it happened, the structure is oriented 16° west of north (that's just the back wall). The east wall appears to be oriented 10° west of north.

We will excavate the south side of the str.



Unit 101, 201 Level 03 TP

This unit began at 94 bs.

It is platform fill, a gray brown mixed soil with limestone inclusions (small to medium - 1-15 cm). We are excavating

this layer to investigate a hollow spot discovered at the base of Level 02.

This hollow spot could be just an empty area in the architecture, but it could also be a cache of some sort and that is why I am digging it.

Well, it was really mostly 112 clay. We removed the soil of Level 03,

a gray to gray brown soil with much

of red limestone inclusions (clay = 117) and that deposit, but its standard fill) which rested on top of another

floor. The new floor turned up at 112 bs. I suspect that this floor is related to the additional wall in

101, 205. It is possible that this is the floor to an earlier version of

Str. 56, but that will have to wait until a better season. The floor

here is more solid than that along - of course it because of the protective layer at depth.

Note: The hollow spot was probably covered by a roof.

Group 109, 203 Level 02

This 203E group was not established over the part of the structure. Remember that the structure does not have

the same angle as the grid. If we had exceeded limit 107, 203, the east wall would have run straight. A 20 group 109, 203 is actually fairly common

109	109	109
201	202	203
707	708	709
201	202	203
107	107	107
201	202	203

X	X	X
X	73	65
X	76	67
X	70	70

X	X	X
X	74	76
X	78	72
X	74	70

Group 109, 206 Level 02

In this group we have an above the level are 90s fairly deep. It would appear to be the back part of the above, we had a concentration of mensario sheets in 107, 206. See page 18 for sampling through the above

109	109	109
204	203	206
108	108	109
204	205	206
107	107	107
207	205	206

X	X	X
X	70	70
X	76	70
X	76	70

General Notes August 2, 1995

There are quite a few long bones in this structure and at least two of these pieces appear to be human. I think all of them I recall reading of structures which contained long bones. But I think the bones in the structure were just lying around. Perhaps the various bones that I have been calling turtle shells are actually shells - well actually I draw some of it as turtle shell, but some of it is undoubtedly plate bone which is shell fragments, but we do know.

Another interesting feature is the alcove in the center of the structure. There were quite a few incense burners in this area as well as other interesting artifacts, but there was a heavy concentration (well made concave) of incense burners toward the south of this area and I would suspect that this area was the location of the incense burners. Besides this alcove there was more. The alcove is

not a level floor, but was sloping. I think there is a back wall on this floor, but I am not sure because there is only one stone in place. It supports the notion that seems fairly abundant but not 100%. What I do not understand is why it is sloping. If they were going just an alcove, there would be no reason for it to slope. It might be that this floor was a way into the structure and maybe into this group. We need to excavate more to determine this, however, if you find this wall have to wait a bit. I am going to excavate more - I am going out and ready to go so in no time.

The alcove is located to 255° E of north or 15° south of east. I have noted that the sewer was just south of this area. Today is 8/3/95, perhaps at the same time this alcove is lined with the same of summer solstice - well see

Bucket elementary

Str. 55T

1. Unit 17 (Level 01) (Level 02) Levels 3-7
all levels

2. Unit 17 (Level 01) Unit 18 Level 1, 2, 3, 4, 5, 6, 7

3. Level 2 ~~19, 10, 11, 12, 13, 14, 15, 16, 17, 18, 19, 20, 21, 22, 23, 24, 25, 26, 27, 28, 29, 30, 31, 32, 33, 34, 35, 36, 37, 38, 39, 40, 41, 42, 43, 44, 45, 46, 47, 48, 49, 50, 51, 52, 53, 54, 55, 56, 57, 58, 59, 60, 61, 62, 63, 64, 65, 66, 67, 68, 69, 70, 71, 72, 73, 74, 75, 76, 77, 78, 79, 80, 81, 82, 83, 84, 85, 86, 87, 88, 89, 90, 91, 92, 93, 94, 95, 96, 97, 98, 99, 100~~

4. Level 1, 2, 3, 4, 5, 6, 7

5. Level 1

6. Level 1

7. ~~Level 1~~

Str. 56

7. Level 01

8. Level 02, 3, 4, 5, 6, 7, 8, 9, 10, 11, 12, 13, 14, 15, 16, 17, 18, 19, 20, 21, 22, 23, 24, 25, 26, 27, 28, 29, 30, 31, 32, 33, 34, 35, 36, 37, 38, 39, 40, 41, 42, 43, 44, 45, 46, 47, 48, 49, 50, 51, 52, 53, 54, 55, 56, 57, 58, 59, 60, 61, 62, 63, 64, 65, 66, 67, 68, 69, 70, 71, 72, 73, 74, 75, 76, 77, 78, 79, 80, 81, 82, 83, 84, 85, 86, 87, 88, 89, 90, 91, 92, 93, 94, 95, 96, 97, 98, 99, 100

9. Level 02

Str. 605

July 25, 1996

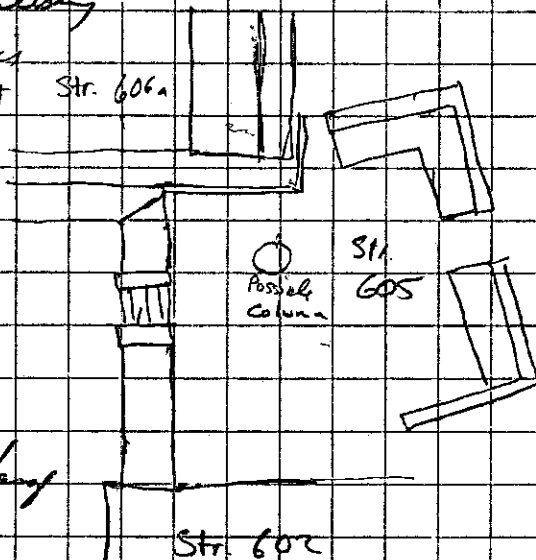
We have actually already begun the excavat of Str. 605 (meaning this year). We also excavated half of it last year. I am using a different grid this year (which is sure to cause some problems), but I think it is worth the trouble to have most of the excavations on the same grid.

We are presently excavating the platform in front of the structure. Remember that this is an *materna* & there is a long empty space in front of the structure. This is the reason that I have only now begun to write notes today. There have been ^{been} no features to describe.

We are now removing level 01 from around the northern arm of the structure. We have observed a lot of turtle shell (as was common last year), but there is nothing else to say at this point.

See my notes at the excavations sheds for S18, 603 where we excavated a test pit (2x2m) and see S18, 604, S18, 605, S17, 604 & S17, 605 for the extent that we excavated for this test unit.

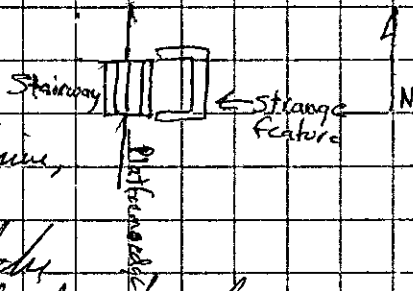
Note: a lot of the notes for this ^{Structure} are included with the Str. 602 notes. This specifically concerns the northern staining of Str. 602 at the ~~area~~ part of the platform immediately adjacent (to the north) to it.



You are probably wondering why there have been no notes for Str. 605 for about a week. It is because the western part of the platform is very dull - with the exception of the area to the north of the stairs of Str. 602. Please see the level forms to check out all of the cool stuff we found there.

For the most part, we only had one level on the western part of the platform because we excavated the benches directly to the fall of the structure (small limestone in a matrix of dark grey iron soil). The floor here is eroded and there is no plastic surface. This was quite predictable as this area was probably not covered by a roof and it was not protected by the collapse of the structure walls. However, there is collapse on the western stairway of the platform, to the west of the platform edge, and adjacent to the walls and benches.

The western stairway is strange. We have only just begun to remove the second level (collapse) and we have noticed an interesting feature. There is a square area 1.5×1.5 m that is enclosed by the stairway and a c-shaped enclosure of stones. This almost looks like a stairway shrine, but this would be odd if it is because it blocks the top of the stairs. Perhaps it is part of the stairway. I guess we will find out when we remove level 02.



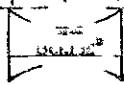
Another problem I have had is with the western wall of the eastern bench in the north part of the structure. We began to fall the wall, but it was interrupted by a tree that did not reappear after (to the north) of the tree. I think that the

Stn. 605

TP

August 5, 1996

area ~~just~~ and the interior corner where the
north and east benches meet is disturbed.
We are also having trouble with the north "arm" of
the structure. It has a length, unlike the
south arm, but it is difficult to follow the western
wall of the bench.



Zarpete

Str. 605

2/27/97

Str. 605 is finished but it is going to cut a 1m wide e/w transect from the base of the stairway. The first 1/2m unit is S16, S92 and the last is S16, S89. I will not use the usual form (Group Form) for this excavation.

Unit	Initial Depth	Final Depth	Lot #	Notes
S16, S92	210	220	6631	
S16, S91	220	225	6632	
S16, S90	223	230	6633	
S16, S89	228	233	6634	

We are logging transects from the building excavations in order to observe the distribution of artifacts in the plazas (if we only excavate the buildings, we will only know about ritual activities in the buildings).

Nothing special to note here. Just check out the artifact frequencies, all units were excavated to the ballast of the plaza (there was no plaster surface).

Str. 605

TP

10/27/97

Regarding TP 518,603. When this unit was excavated, the plaster floor of the structure was designated a L4 and the fill beneath it as L3. In the report, I changed this to L3 = the plaster surface & L4 = the fill.

TP
518,603

TP