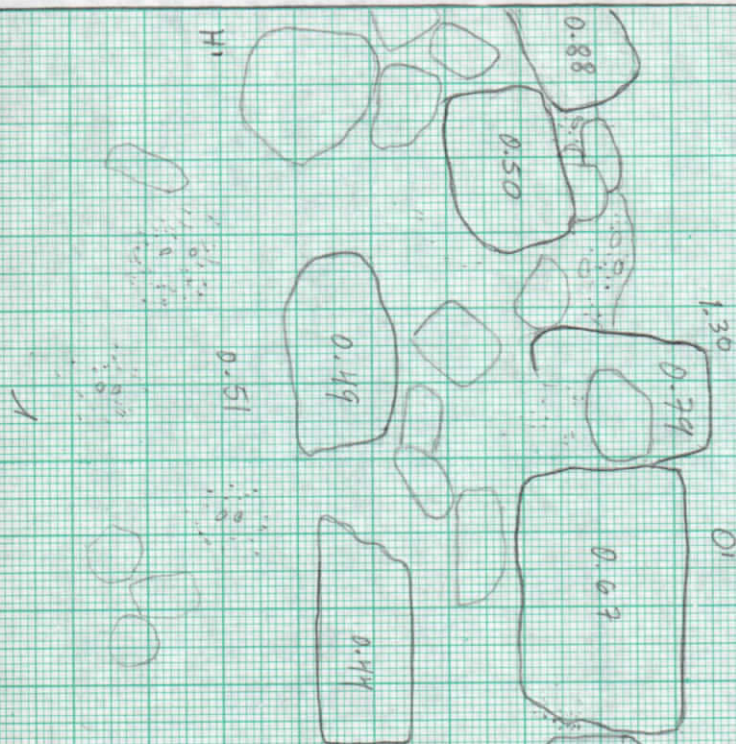


530  
576

H1  
H1

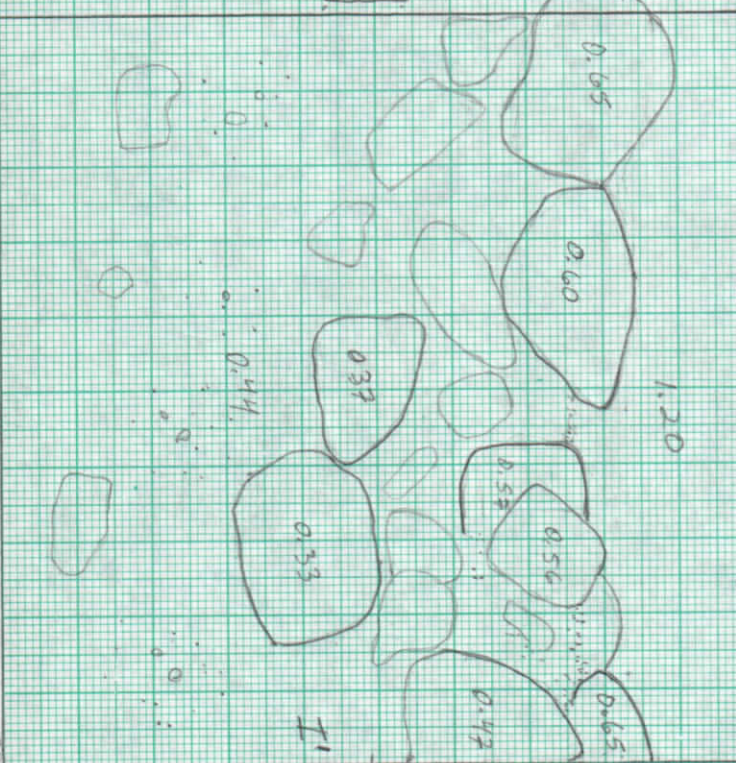
537  
576



1.30

01  
01

537  
577



1.20

537  
578

I1  
I1

530  
577

530  
578





539  
578

539  
599

539  
580

538  
578

537  
578

537  
579

537  
580

1.40

1.41

1.38

1.38

1.35

1.38

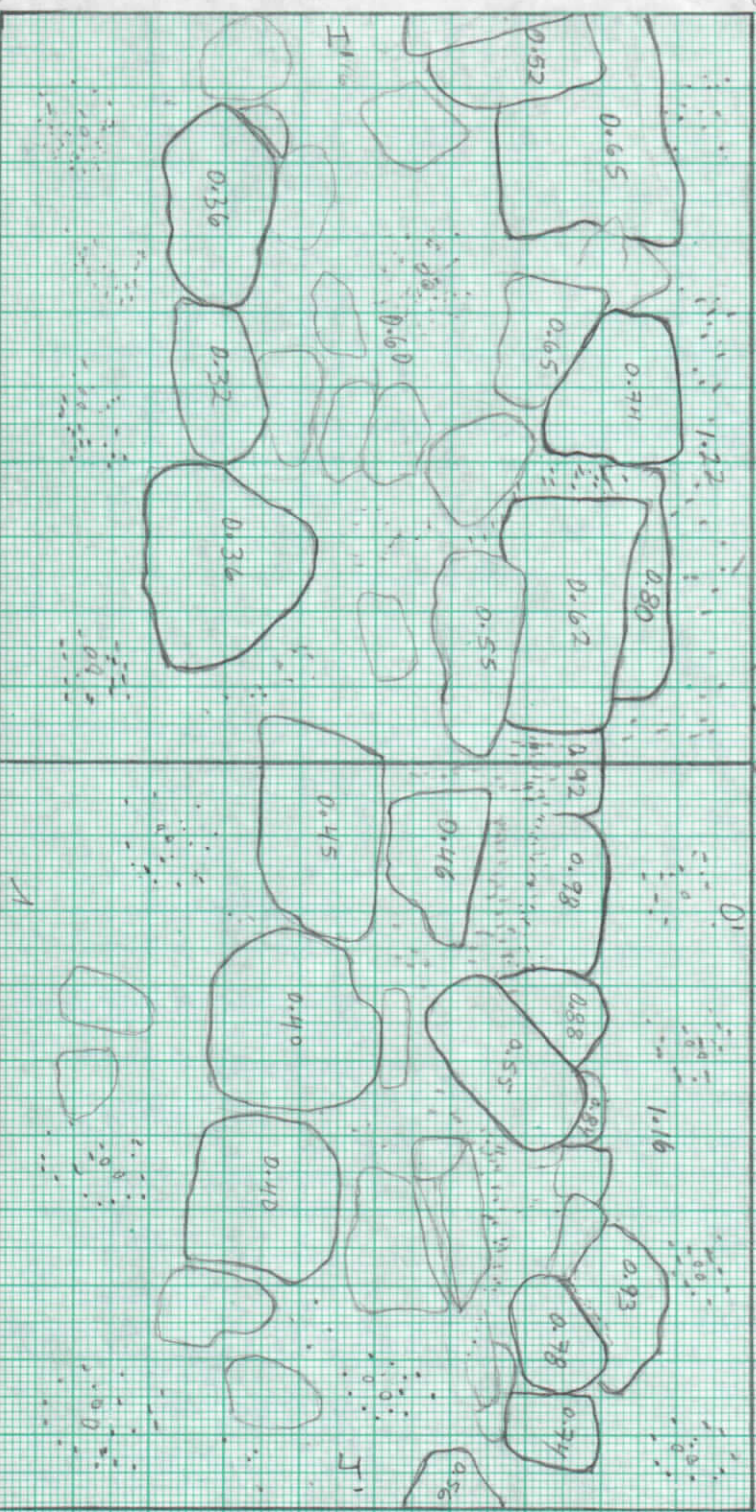
1.30

1.33



536/575

537/578



537/579

537/580

536/574

536/580

SITIO ZACPECEN  
 PLANTR DE STR 606  
 ESC. 1:10  
 MS  
 28-5-97





537  
580

537  
581

537  
582

1.34

1.37

1.35

1.35

1.29

1.25

1.24

1.20

538  
580

538  
582

537  
580

537  
581

537  
582



522/508

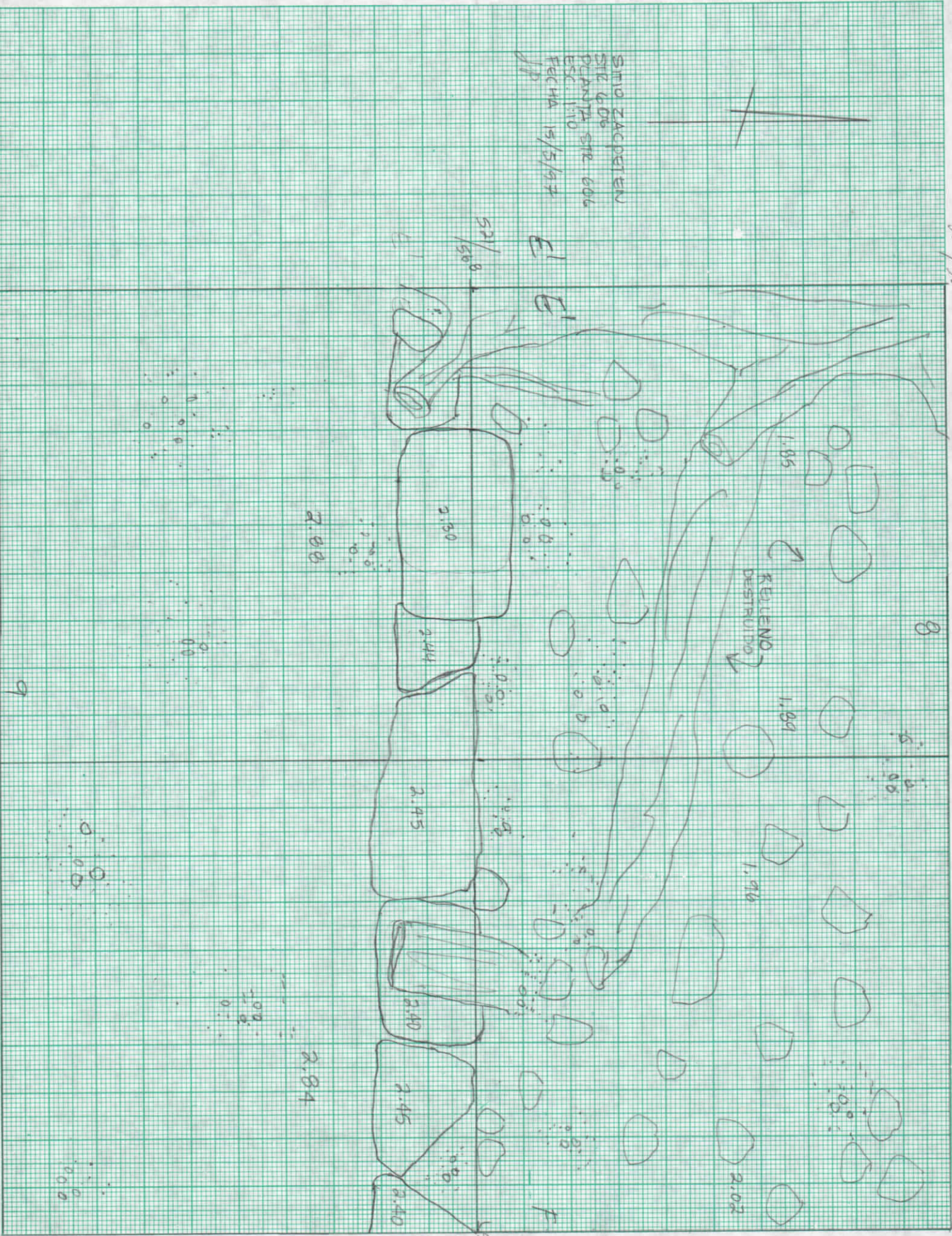
8

521/509

520/570



SITIO ZACAPETEN  
SITE 606  
PLANTA SITE 606  
ESC. 110  
FECHA 15/5/97  
JP



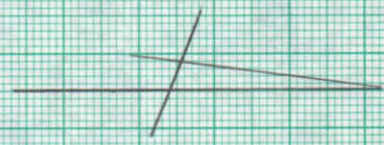
520/508

9

520/509

520/570



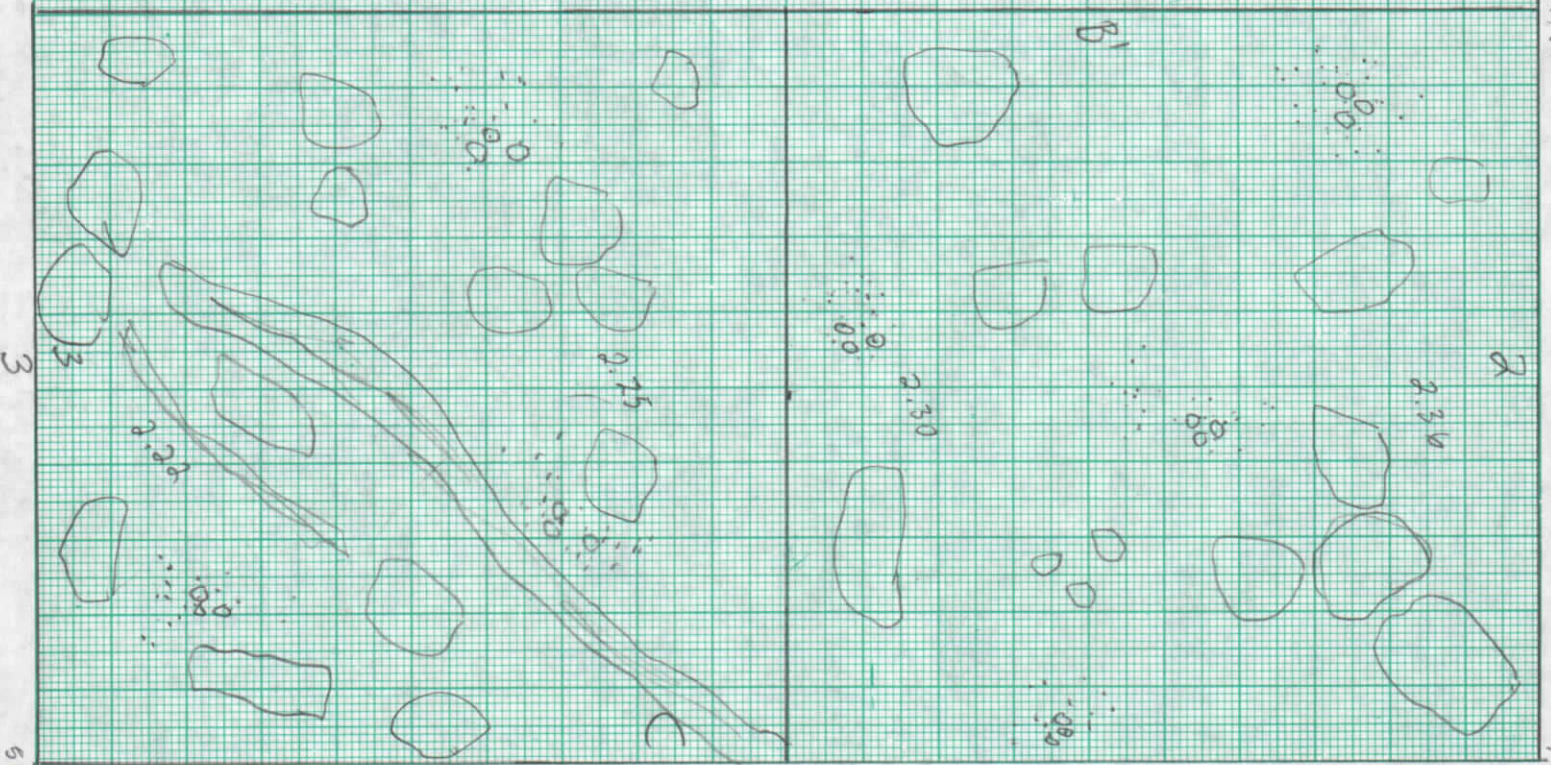


SITTO ZAPPETENO  
STR. 606  
PLANTA STR. 606  
ESC. 1:110  
Firma: 19/5/12  
HP

532/51

533/50

539/561



3

2

534/52

535/53

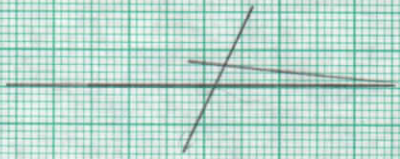
535/53



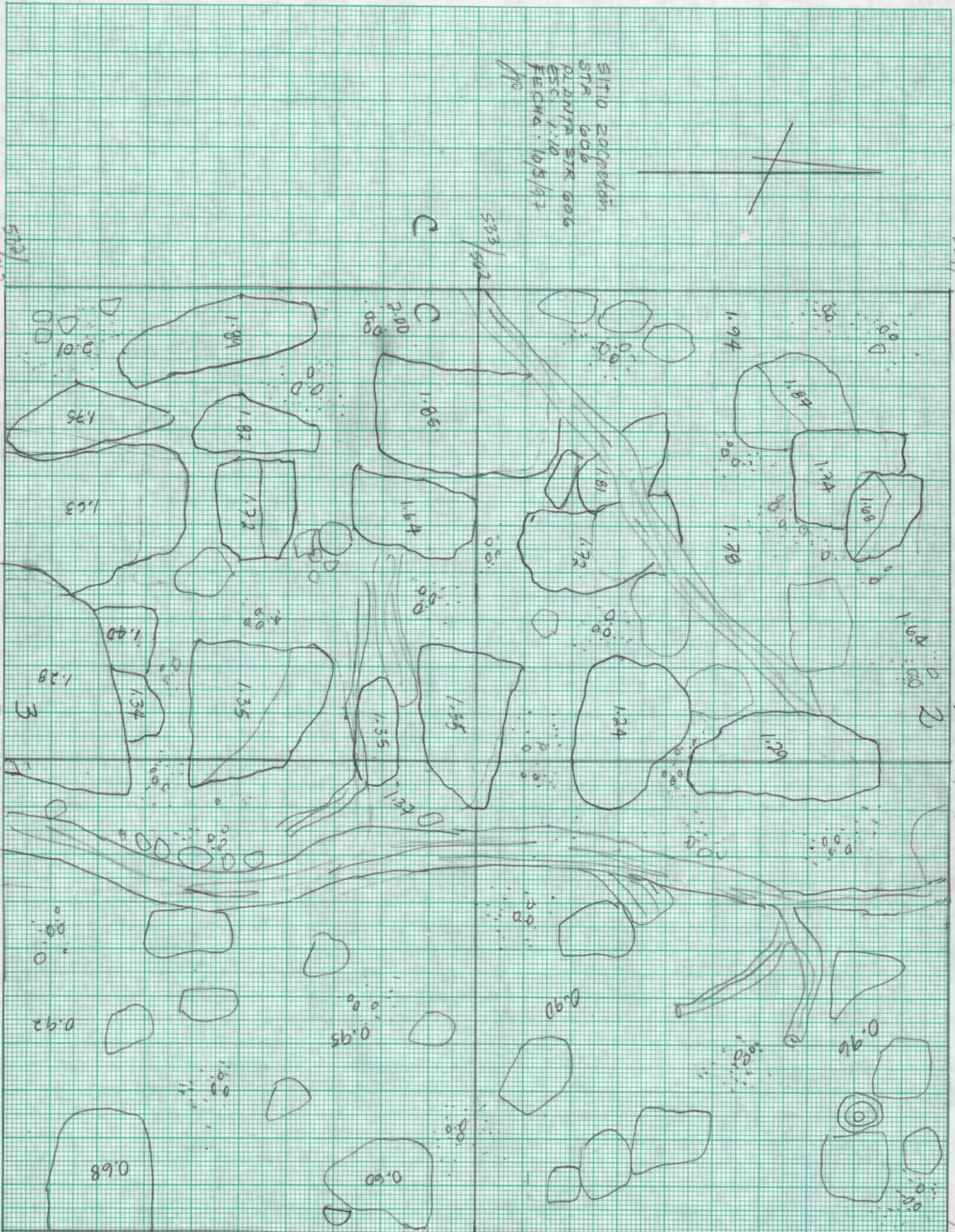
534/502

2 534/503

534/504



STIO Zapopan  
 STA 606  
 PLANTA STX 606  
 ESC 1:10  
 FECHA: 10/3/12



534/502

3 534/503

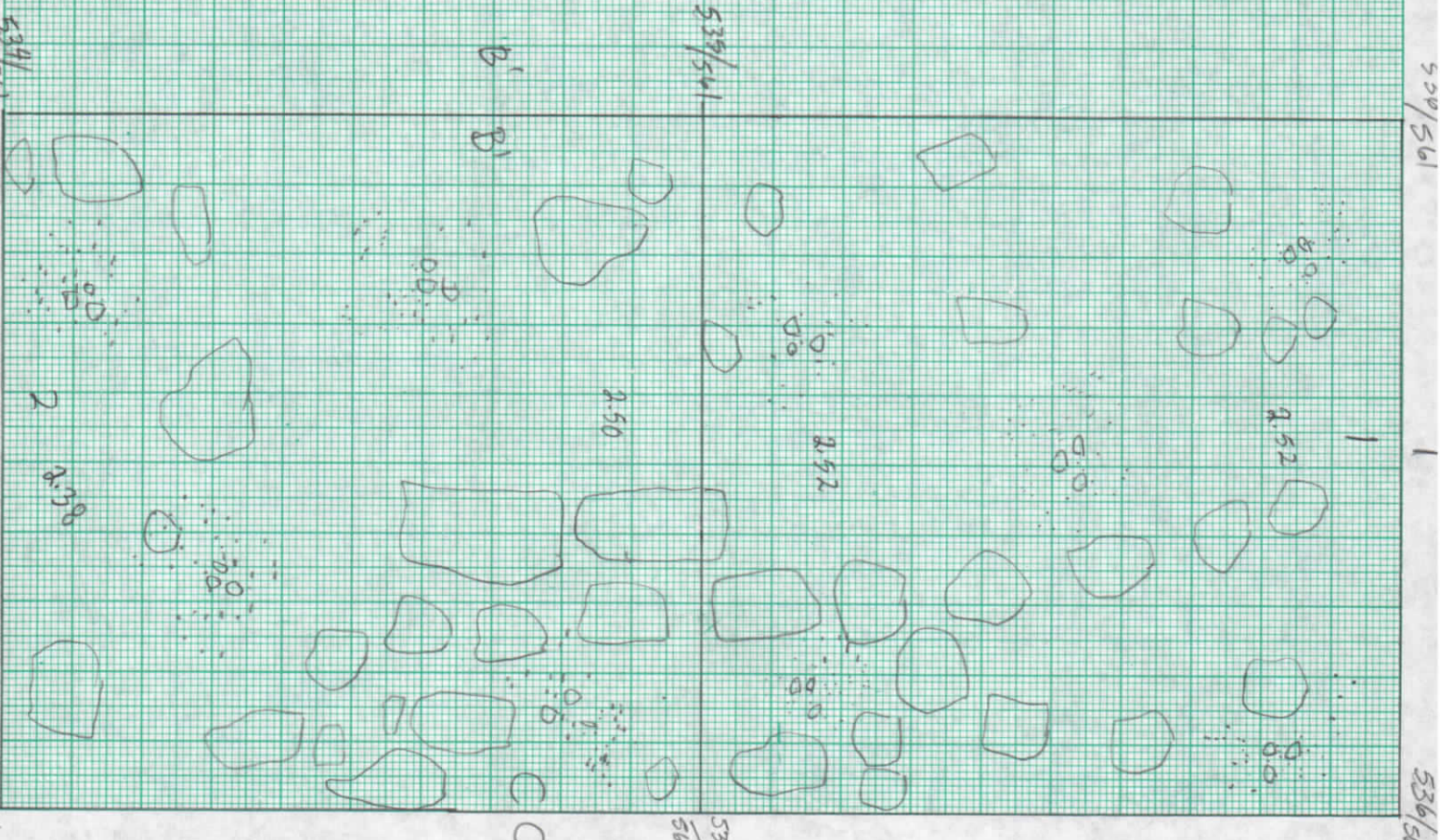
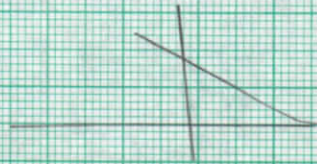
534/504

533/502

533/501



BITO ZACATEEN  
STE. GOV  
PLANTA STR GOV  
CSC 1:10  
FECHA: 9/5/97  
JPO

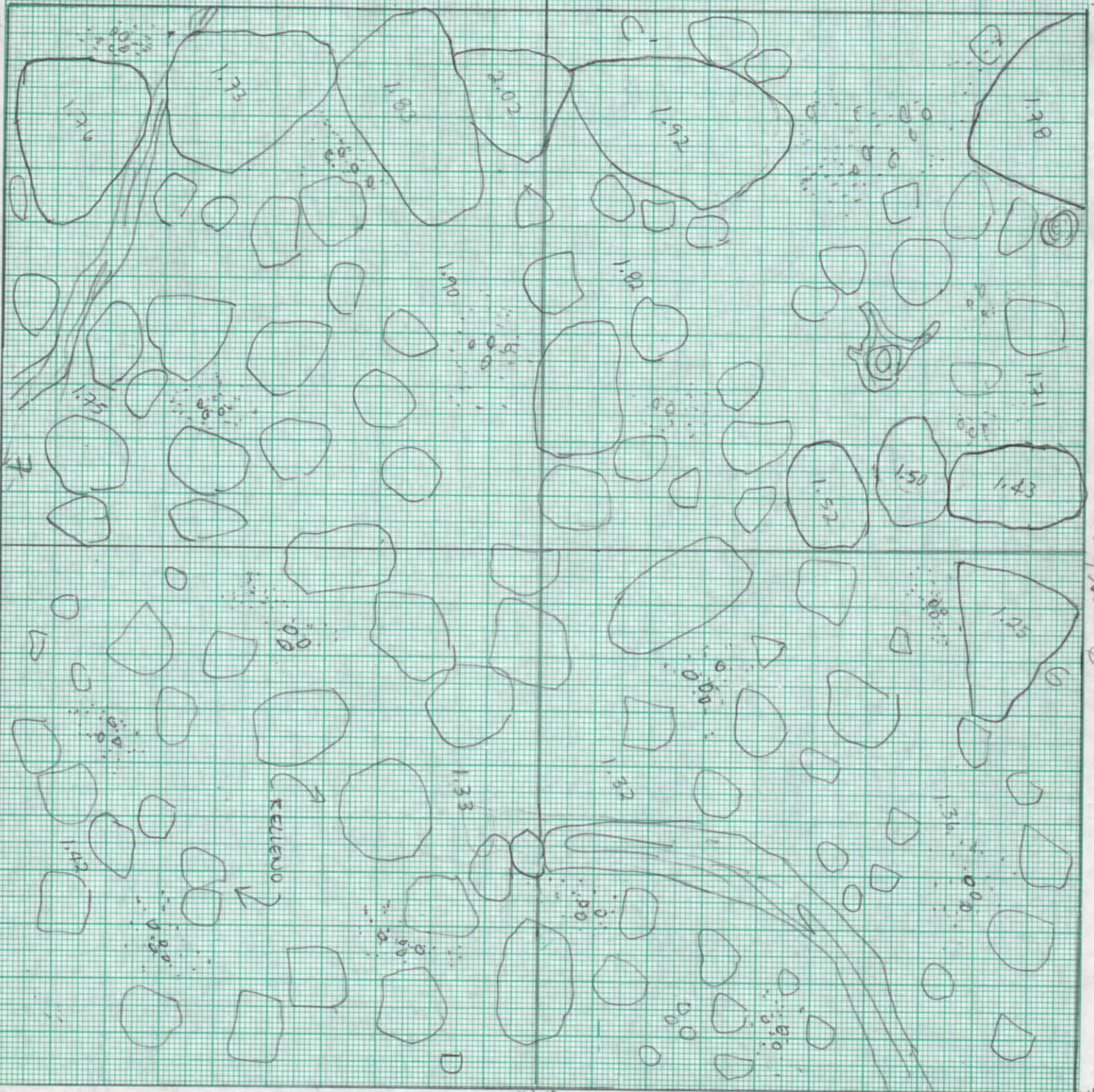








SITIO ZACAPETEN  
STR. 606  
PLANTA STR 606  
ESC. 1110  
FECHA: 14/5/97  
OP



524/502

524/502

524/503

524/503

524/504

525/504

525/504











532/561

3

532/562

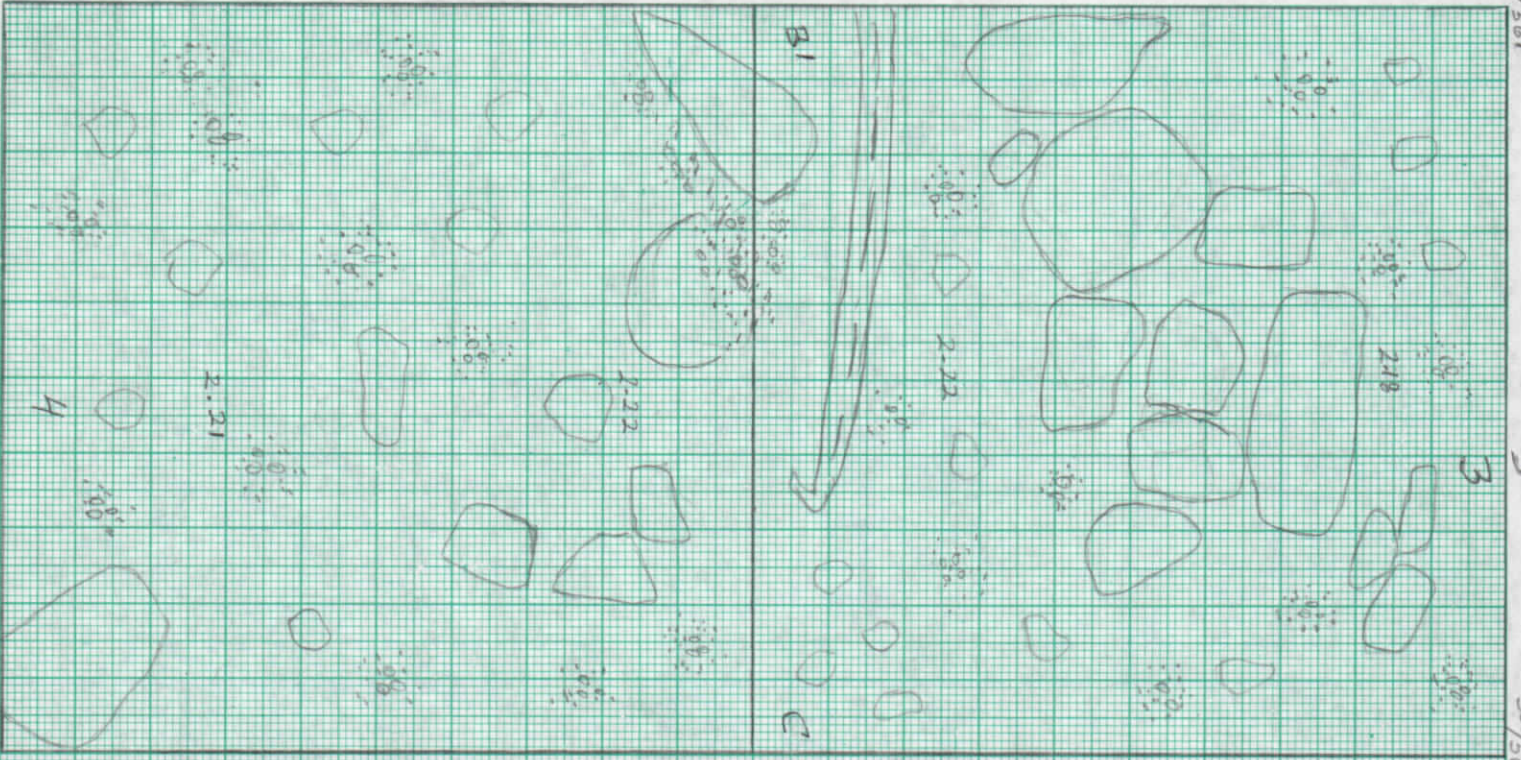
531/561

531/562

530/561

530/562

H



SITIO: ZAPCETEN  
 PLANTA STRA 606  
 M.S.  
 10-5-92



530/561

4

530/562

529/561

B1

B1

2.17

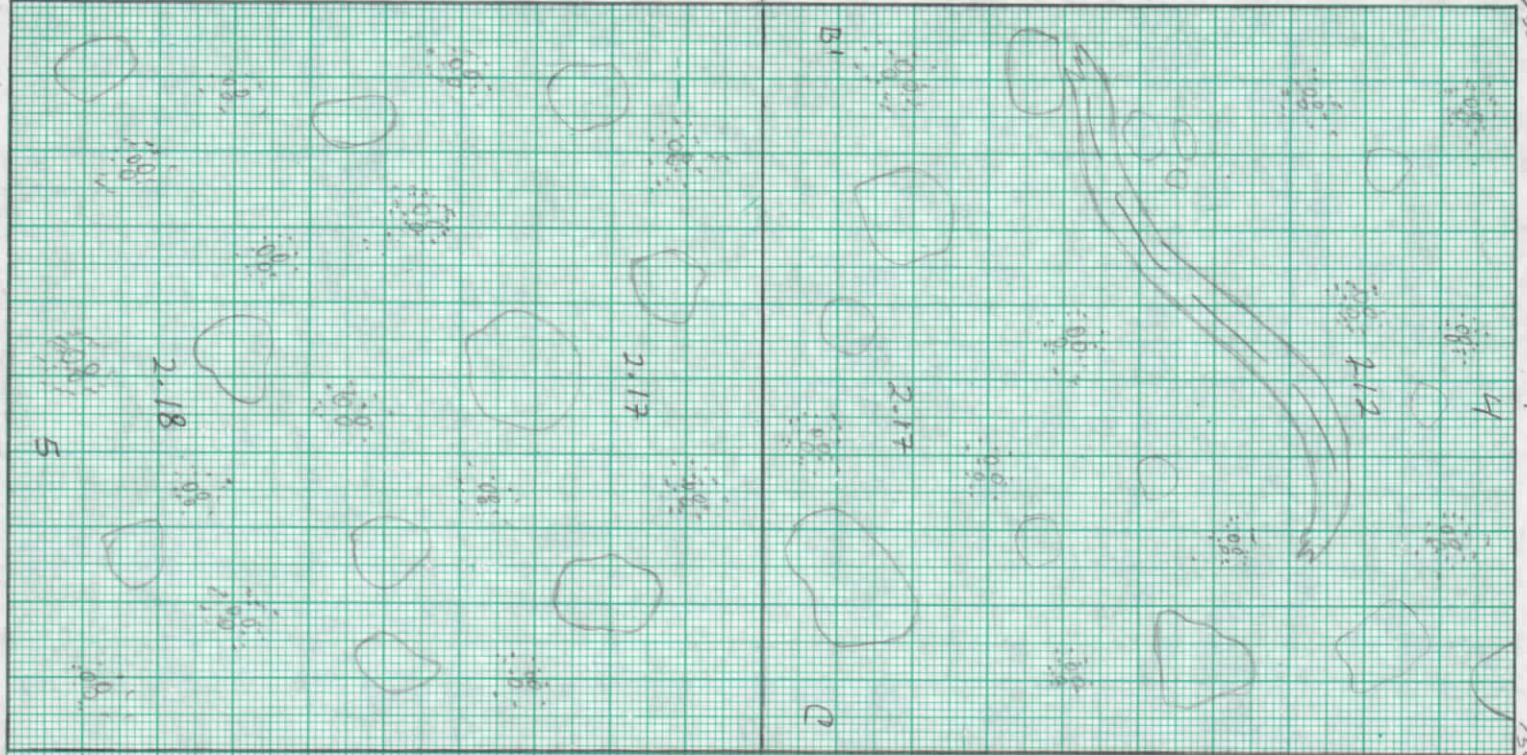
Q Q

530/562

528/561

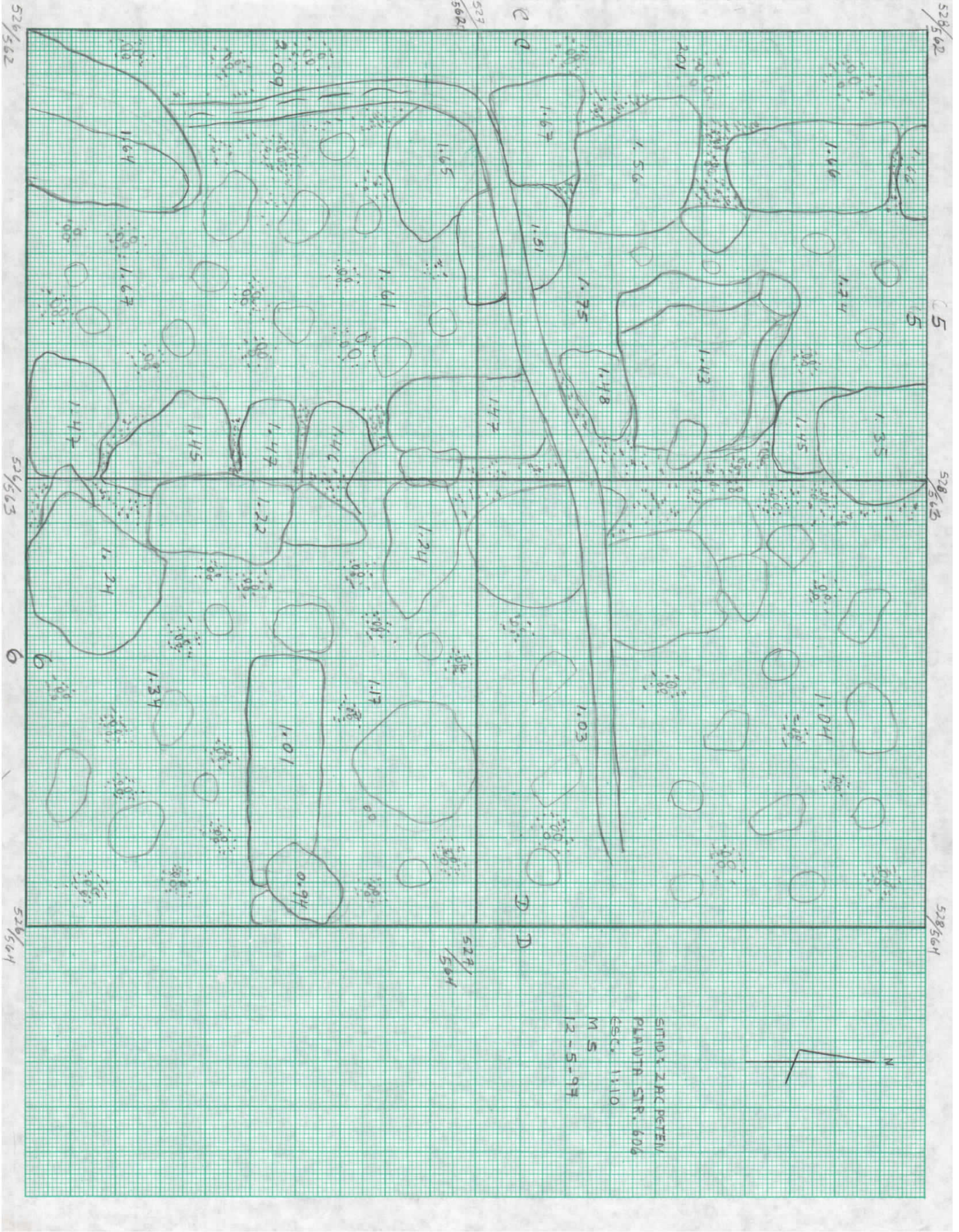
5

528/562



SITIO : ZARAPETEN  
 PLANTA STR. 606  
 ESC. 1:10  
 M.S.  
 12-5-97





ENTO & ZAC PETEM  
 PLAVITA STR. 606  
 EST. 1:10  
 M S  
 12-5-93

529/561

529/564

6

529/563

529/562

529/564

529/565

5

529/562

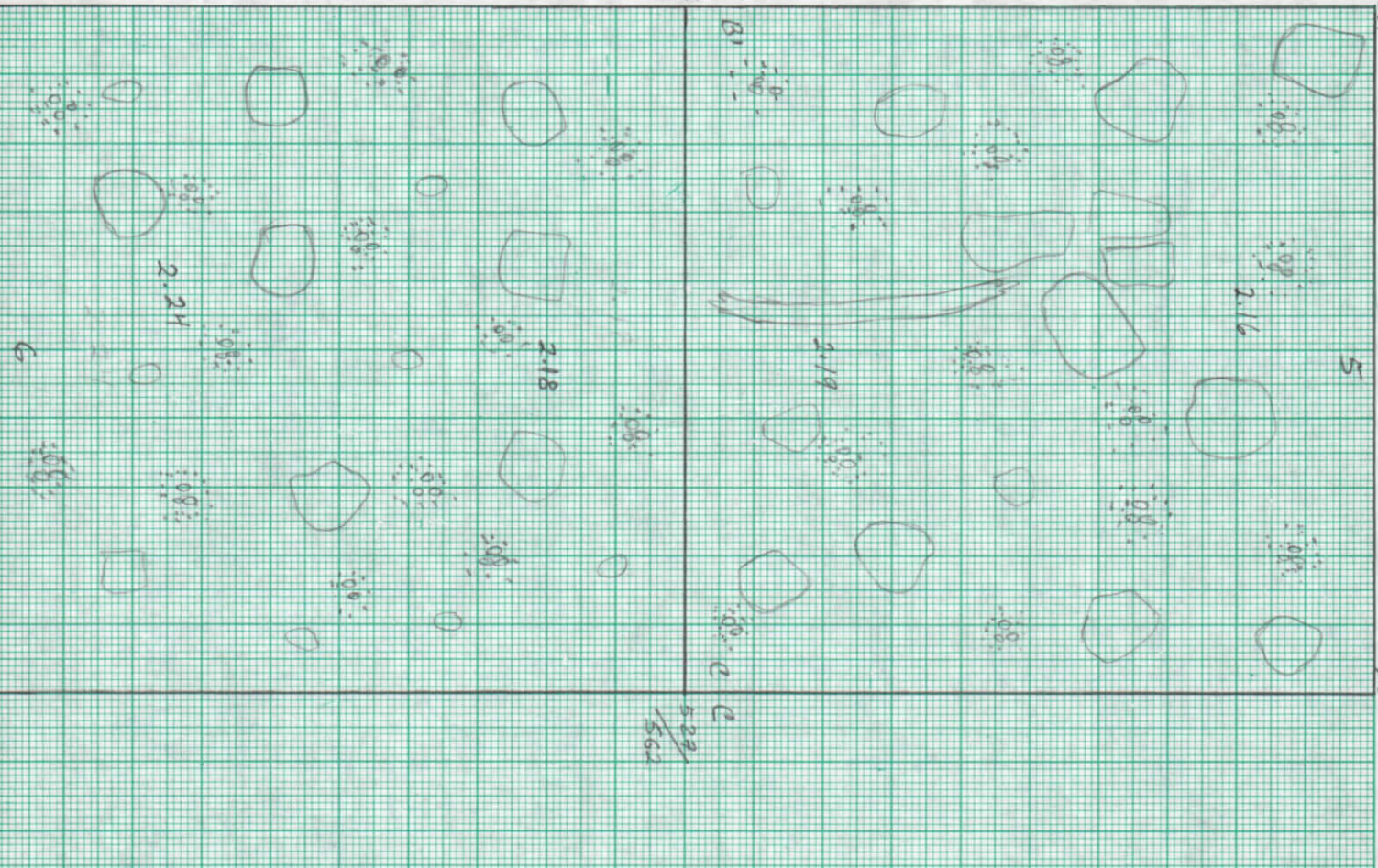


528/561  
5  
528/562



SITIO C ERRETTEN  
PLANTA STR. 606  
ESC. 1/10  
M.S.  
12-5-98

528/561  
B1  
528/562  
C



528/561  
C  
528/562  
C