

Timothy Pugh
Nixton Chick'

(1# nitrate 2013

nitrate of nitrate
nitrate

Magnetic Declination 6/10/13
For Central Temple (Station #1)
 $1^{\circ} 1' 16'' E$

calculated for $16^{\circ} 57' 5'' N$
 $89^{\circ} 56' 40'' W$

Grid oriented to true north
using a compass.



This notebook belongs to

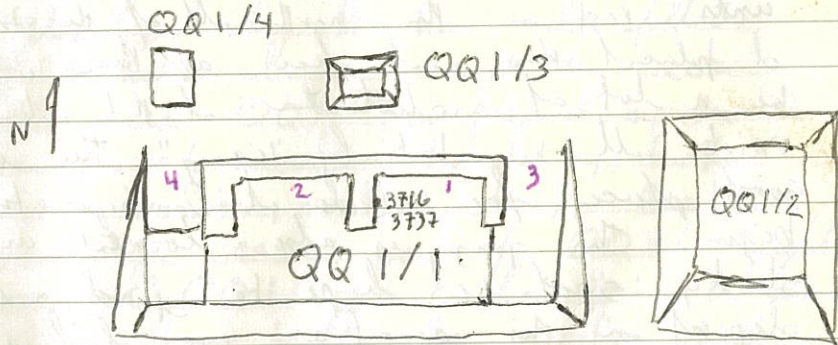
6/10/13

We have all necessary permission so it is time to head out to the site. We will work "quietly" for now as our ex-co-director still seeks to cause us problems. Today we will hopefully put in the grid.

We set a station on top of the central mound and shot several points in the area of Str. 188. I will not shoot anymore at this point as the machine is just slightly off, but still functional (meaning the error will be very slight - less than the effect of the rod in the soil).

6/11/13

Spent the morning correcting yesterday's errors. We reset the four stations (2-5) near Str. 188. We then set up on the structure to the north east of 188 (Esto 2). We then began to set in nails beginning with 3716, 3737 which is roughly in the center of Str. 188.



There are quite a few structures to west of 188. I recall surveying them in 1995, but I do not think they are on the site map.

6/12/13

We began by doing some contours on the structures. Note that 188 will now be called QQ1/1 and the build to its east will be QQ1/2.

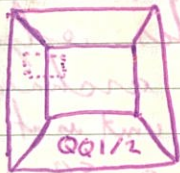
6/13/13

On site at 6:30. We will continue to lay in nails on QQ1/1 (formerly 188). I may try to begin excavations today - let's see. Lay in nails in one 3x3 - 3722, 3734. We put in a nail in a palm free and set it as 1m below datum. It is located at 143.96 (144.96). The three x three (3722, 3734) is located ^{for the datum} behind Str. QQ1/1. The southernmost units rest on the northwest of the structure. I placed the unit here as there will not be a lot of architecture at that which does exist will be relatively "easy". This is a good place for Wilfrido and Dominique to begin. The group is also located in a shady spot. I hope to find a refuse deposit in this area (as we did in 1995). We began excavations (just a centimeter), but... pilas.

Friday, Orzabal, it has been a good week. We are headed out to the site via launch and will continue the excavation of Level 1 of QQ1/1.

6/17/13

Monday on site. We continued the excavation to the north of QQ1/1. We also continued to lay in the grid on QQ1/1. In addition we began the grid on QQ1/2 (the bldg to the east of QQ1/1). We will initially excavate a 3x6m block on the southwest corner of this structure. We hope to find a trash dump or possibly part of the superstructure. We first hope to determine if the bldg was used in the Postclassic and, if so, how.



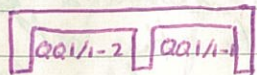
Please note that we will use the numbering system developed by Pio Rice. It follows a hierarchy beginning with the sector (Colm this case QQ). Then followed by the plat form group (numbered), followed by further constructions (number, number, letter). So the unit taken in the eastern part of QQ1/1 might be called QQ1/1-1a where "-1" refers to the eastern hall. The western hall will be designated as QQ1/1-2.

QQ1/4

QQ1/3



6/17/13 cont.



Back to QQ 1/2 - we laid in the primary nails and then put in one full 3x3 of secondary nails (1x1m). The NE corner of this group is 3718 3789. We set the vertical datum at ~~3718~~ 147,497. Elsa Lopez will take charge of this excavation.

We will also begin efforts to build a bathroom. We will need to excavate a 5x5. We will place it near the lakes edge where I expect there are no archaeological remains in this area. The unit is at 3760, 3654. We will excavate as a 50cm x 50cm. The nail (3760, 3654) is in the ground at Z=134,186.

6/19/13

We spent Tuesday (6/18/13) in the lab as we were rained out by a tropical storm. Things are fine on site - not that much rain yesterday. We will continue to excavate and map the site. Things are moving slower. We are short people today (well on Wednesday out). We finally got started on QQ 1/2. Again, Elsa will supervise this area.

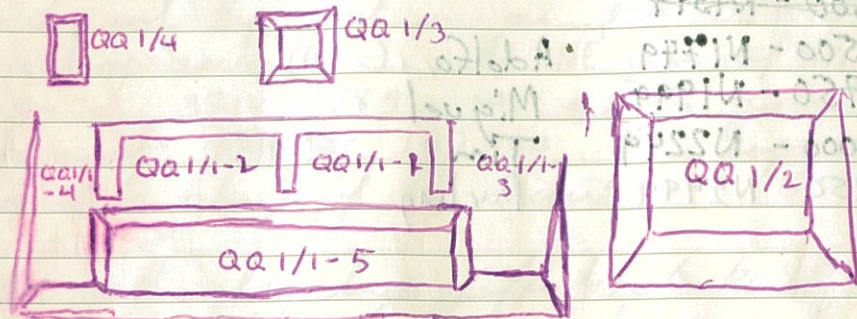
Lotc Number Control

N1	general surface collection
N2-N499	Evelyn
N500-N999	Elsa
N1000-N1249	Justin
N1250-N1499	Yessica
N1500-N1349	
N1500-N1749	Adolfo
N1750-N1999	Miguel
N2000-N2249	Tim
N2250-N2499	Darling

[Faint handwritten notes and diagrams on the right page, including a large rectangular diagram with internal lines and some illegible text.]

Portnoy and Mull 6/20/13

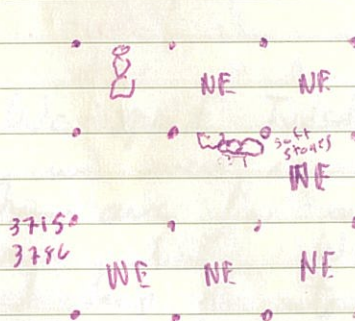
Back at it. We are still dealing with some sort of old weather. We are hopefully that today will be more productive. Excavation continued south of the north wall of QQ 1/1-1 removing Level 1. Elsa continues on the NW corner of Str. QQ 1/2.



This is how I have the area divided up so far. Let's see if this holds up once we can process the mapping data. I hope that we will have more details.

3717
3787

6/21/13



At QQ 1/2, there is a possible line of soft limestone in 3717, 3788. We will investigate to the east to see if it continues. Yesterday we encountered a census (composite) shell in this area (Mural panel). We also had a net-wright.

I hope that this structure (QQ 1/2) is some sort of ceremonial structure from the

8/11/13

Postclassic period. Its height and proximity to the double hall is suggestive, but we need some evidence.

At QQ 1/1-2 we are continuing to move to the east (now partially behind-north of) QQ 1/1-1. We are looking for something that we can follow to begin to carefully uncover the north side of the north wall. Note that in the area north of the north wall, in the NE corner of the structure (QQ 1/1-2) we recovered numerous chunks of plaster surface in Level 2. We are not sure (actually we still doubt at this point) that this material came from the Postclassic construction though it is possible. It seems likely that it is simply material included in the fill.

At this point, we had a little rain (ca 12:50) and ended a bit early (the wind was intense).

7/1/13
7/1/13

It was out for a week in the city and returned on the 29th. They worked while it was out but it seems to have moved slowly. They only did L1 (by my orders) but did not get cement floor. On the other hand, they put marks on QQ 1/4 which I will give to Justin. Evelyn continued to mark to the east (north of the north wall of QQ 1/1-1)

At Str. QQ 1/4 we placed the vertical date at 143.548. I now think that the building faces west and is C-shaped. It does have more refuse on top than the other structures we have tested so far. Justin will be in charge of a 3x6 m area on this structure.

Carlos

Evelyn

Elsa

Wilfredo

Adolfo

Davij

Rachiel

Dominique

Justin

Yessica

Donis

Oscar

Santiago

7/1/13

In QQ 1/4, Justin is finding a moderate quantity of artifacts including a green obsidian blade. This building is more than I expected.

In QQ 1/2, Elsa continues to remove blocks as noted. She has recovered several sherds, but she is also finding net weights (n = 5 or 6). So... the function of this structure is still in limbo. The pesos were concentrated in the eastern portion of the first 3x3. So... we may need to excavate to the center.

7/2/13

The vertical date of Str. QQ 1/3 was set at 144.451. We laid in a few groups on the SW corner of QQ 1/3. Yessica Trippax will take charge here. She will begin with Group 3728, 3734. We will investigate the postclassic use of this structure (if any). I'm fairly certain there will be something. Please note that this bldg has been looted with an E/W trench.

On QQ 1/1-1, Evelyn continues L1. I think we have finally defined the north wall but there may be another building built on top of the postclassic construction. It is a row of small stones that do not yet make sense though they are roughly

7/2/13

parallel with those of the arch wall.

Justin continues on QA 1/4 and has almost finished a 3x3. The frequency of outcrops has decreased in the present units. It is possible that the earlier high frequencies were the result of a tree fall.

7/4/13

In QA 1/4, Justin is drawing one of his 3x3 m units. I'm still uncertain of the direction that this building faces. Note that he is just drawing the base of L1. He also contains excavations in the 3x3 in the east side of the structure.

In QA 1/3, Yessica continues to excavate L1. We are not defining and of its walls yet, but we hope to in L2. Note again that she is in the SW corner of the structure.

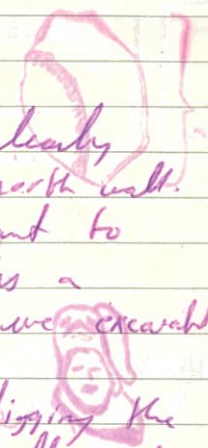
7/9/13

In QA 1/2, Elsa is almost done with L1 in her three 3x3 m areas. So far we have well defined walls only on the north side of the building.

In QA 1/1, We are finally clearly defining the north face of the north wall. We are beginning slowly as I want to make certain that we did not miss a bench feature the last time that we excavated here.

Note that we are also digging the south side of the north wall, at least one course of stones in this wall have been displaced. This first (if it is first) course tends to be composed of soft limestone. The stones tend to be laid flat as opposed to be laid on their edge. They are not rectangular, but may have been shaped for facing stones from earlier construction.

I think I was wrong here. I think that these stones are actually facing stones on the wall. They are composed of the soft limestone so were likely decorative (roca caliza).

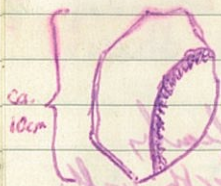


CA/AF

7/4/13

clm 3723, 3741, Evelyn found part of a sculpture in QA 1/1 (north of north wall) in what is either collapse or fill. The sculpture fragment is simply the border of an image. It is composed of soft limestone.

We will search the stones carefully for other sculptures.



On the south side of QA 1 (roughly in the center (E/W) I found a



figure head on the ground surface. The area is lightly disturbed by erosion and MAY have been a refuse dump. The figure includes a human face wearing a bird headdress. It seems to be Late Classic.

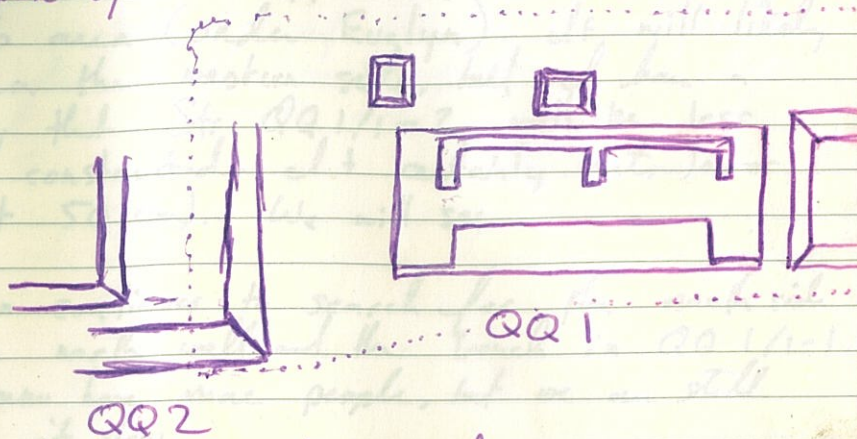
7/5/13

Looks like a nice day today. Justin will finish L1 today on QA 1/4 (3x6m). The walls of the platform are not making themselves known... we find them.

We are clearing a ^{part of} complex to the west of QA 1 (which will logically be called QA 2). Actually, we are just clearing a small section of the eastern edge of this complex. I plan to begin excavations here on Monday.

7/5/13

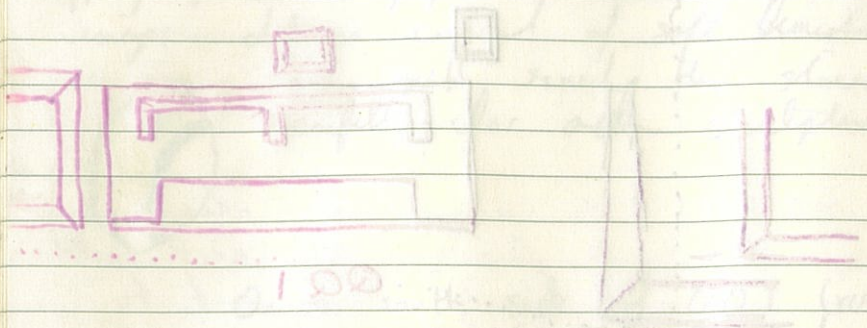
clm QA 1/2, Elson has completed L1 and is now searching for buried walls - nothing visible at the base of L1.



As noted we will extend into QA 2 ASAP. I am also planning to extend to the east of QA 1. Again, I need to find the limits of this community.

7/12/13

~~7/12/13~~



QQA 500

7/8/13

On site Monday. We are beginning work on the eastern side of the halls in QQ 1/1-2. Adolfo will be in charge of this area (under Evelyn). It will likely mirror the western side, but I have a feeling that Str. QQ 1/1-2 will be less well constructed. It certainly sits lower (about 50 cm). We will see.

Evelyn continues to search for the north side of the north wall and the bench in QQ 1/1-1. We now have more people, but we are still taking it slow.

Justin is removing L2 in Str. QQ 1/4, but the structure's walls are not appearing rapidly. He is working on a single 1m wide row for now.

7/9/13

Have been busy with various tasks, but much is being accomplished. Miguel ~~and~~ has begun work on QQ 2/1 which is a low structure on the eastern edge of QQ 2. Recall that QQ 2 lies to the west of QQ 1. I hope that it is a domestic group.



..... 3698 ...
3649

Miguel began in Group 3698, 3649. He is on the slope east of QQ 2/1. We hope to find refuse in this area.

7/8/13

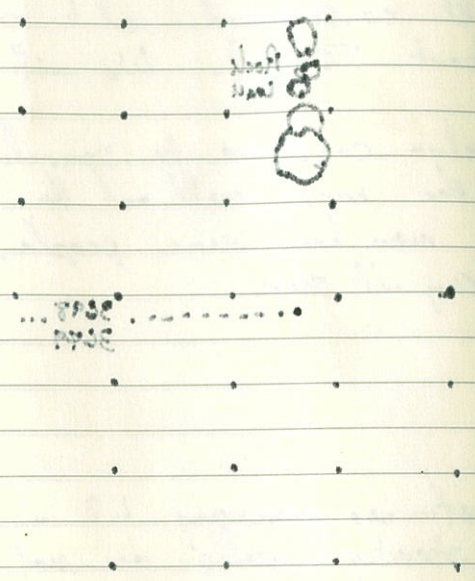
On the morning of the 8th we began work on the eastern side of the hill in the area of the wall. It will be in the area of the wall. It will be in the area of the wall. It will be in the area of the wall. It will be in the area of the wall.

Further east to search for the wall in the area of the wall. It will be in the area of the wall. It will be in the area of the wall. It will be in the area of the wall.

The wall is in the area of the wall. It will be in the area of the wall. It will be in the area of the wall. It will be in the area of the wall.

7/11/13

Handwritten notes, mostly illegible due to bleed-through from the reverse side of the page.



Handwritten notes at the bottom of the page, mostly illegible due to bleed-through.

7/11/13

Yesterday we had a bit of rain and I was busy with getting everything in order. Today we are back in the field with a smaller crew (there is a storm over Belize that could move this way).

On QQ 1/1-1, we are still working to define the bench. We are finding some fragments of plaster, but have not clearly defined the bench surface or its southern edge. I think there is more disturbance in this part of the building.

In QQ 1/1-2, Adolfo continues L1 on top of the bench corner (NW). He has found a few ($n=3$) chert cores (at least I think they are cores - they are bifacial). He also encountered a tripod foot.

In QQ 1/2, Elsa is in the lab today. Yesterday, she still had not encountered the west wall.

8/11/13

[Faint, mostly illegible handwriting]

[Faint, mostly illegible handwriting]

[Faint, mostly illegible handwriting]

[Faint, mostly illegible handwriting]

7/11/13

In QA 1/3, Jessica continues the removal of ~~the~~ LI in her 3x6. So far no really cool artifacts have been encountered. However, I hope that she is getting some Postclassic refuse.

In QA 1/4, Justin continues searching for structure walls. It is kind of a mess but he has, at least one line of soft limestone laid flat (one course) on the west side of the structure. He still periodically finds interesting artifacts including a grade bowl shard, a serpentine axe/adze, and a couple of tripod feet.

In QA 2/1, Miguel continues to define the edge of the platform. He is finding post classic refuse including one small point. I am beginning to think that these artifacts were not common before the Late Postclassic period. This is likely (QA 2/1-1) the first definite Postclassic residence of this season. Note that Str. 183 of the 1995 season was also likely a residence associated with this community.

7/11/13

Handwritten notes, mostly illegible due to bleed-through from the reverse side.

Handwritten notes, mostly illegible due to bleed-through from the reverse side.

Handwritten notes, mostly illegible due to bleed-through from the reverse side.

7/12/13

On QA 1/1-1, Evelyn continues on the ~~the~~ north wall (north face). At this point the wall stands about 45 cm high. We are also working to define the main bench of the north portion of the structure. It is possible that the bench is terraced (but I think this terracing might be an illusion).

Adolfo continues LI on the east side. He found a large plate sherd to the east of the east wall.

On QA 1/2 Elsa continues her search for a wall... as does Jessica in QA 1/3. So far we have had no success. ~~13~~

7/15/13

Back on Monday on a dreary day. We continue to define the bench in Str. QQ 1/1-1. There is now preserved floor in the newer units to the east. Note that we also define nails from the 1995 excavations. I will map them in when we have

Some new & old datum measures

Adolfo (Str. QQ 1/1-2) 144.003

Miguel (Str. QQ 2/1-1) 140.115

Evelyn (Str. QQ 1/1-1) 144.881 (new datum on the east side)

Note ^{in QQ 1/1-1} that the datum on the east side of the structure is 8 m higher than that to the west. This is the fault of line levels.

7/12/13

Back on Monday we had a meeting with the archaeologists. We discussed the plan for the excavations. I will report on the progress of the excavations.

Some more old photos were taken. I took photos of the excavations. I took photos of the excavations.

The next thing I did was to take photos of the excavations. I took photos of the excavations.

7/16/13

All continue in pretty much the same activities. I hired two new workers Ronald and Juan (we also have Oscar, Denis, Victor, and Santiago). I hope to increase our productivity just a little. We are making progress but it is spread thin. With the exception of QQ 1/1, I worry about how much info we will gather regarding architecture this season.

Today I began a program of 50x50cm with the hopes of getting a more widespread sample. I am ^{also} using this method so that we can work in the areas where they are keeping cows (and not hurt them). They will extend to the N, E & W ^{40cm deep}

Miguel has finished (almost...) two 3x3m areas in QQ 2/1-1. Given the nice sample of ceramics that the structure is producing, I will allow him to excavate one more 3x3m area to the west. I may allow more later as this is a good sample.

(Sondos 2)
The first of our 50x50 cm units was a success. We encountered a tripod foot, deer head adorno, ponceca, animal bones, etc in greater quantities than ~~was~~ in Str. QQ 1/1. This may be a trash dump. Actually

7/16/13

All content in this notebook is...
I will record the sondros in
this notebook (see back) rather than on
forms.

On site a little burnt out today. We
are now on the edge of making real
progress in all of the excavations.

As noted I began a system of shovel
tests. They are precisely 50x50cm and will
be exactly 40cm deep. I am not
currently excavating them on a formal grid
(though their precise positions will be recorded
by the total station). We cannot use a
grid as we cannot put them on large
structures, need to avoid trees, and work
in cow fields. So the sample will
be judged at convenience based
(with some grid to it).

Note that in Str. QQ 1/3, Yessica continues
to define (or try to define) the structure's
walls. She is now in Level 2.

Lot

it must be. The unit has no stratigraphy
and is a very dark clay loam from 0-40
cm BS with few stones. I am very happy
with it. I will record the sondros in
this notebook (see back) rather than on
forms.

7/17/13

On site a little burnt out today. We
are now on the edge of making real
progress in all of the excavations.

As noted I began a system of shovel
tests. They are precisely 50x50cm and will
be exactly 40cm deep. I am not
currently excavating them on a formal grid
(though their precise positions will be recorded
by the total station). We cannot use a
grid as we cannot put them on large
structures, need to avoid trees, and work
in cow fields. So the sample will
be judged at convenience based
(with some grid to it).

Note that in Str. QQ 1/3, Yessica continues
to define (or try to define) the structure's
walls. She is now in Level 2.

My Lots

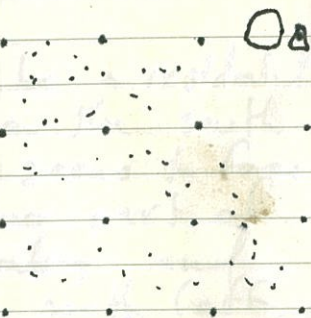
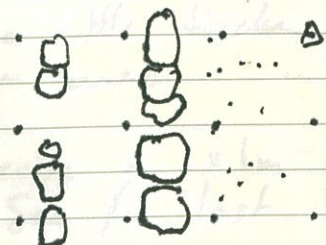
- N2000 Sondco #2
- N2001 Sondco #3
- N2002 Sondco #4
- N2003 Sondco #5
- N2004 Sondco #6
- N2005 Sondco #7
- N2006 Sondco #8
- N2007 Sondco #9
- N2008 Sondco #10
- N2009 ~~Pozo~~ Pozo 3740, 3764.5 Level 1
- N2010 Pozo 3740, 3764.5 Level 2
- N2011 Sondco #11
- N2012 Pozo 3739, 3764.5 Level 1
- N2013 Sondco #12
- N2014 Pozo 3739, 3764.5 Level 2
- N2015 Pozo 3741, 3764.5 Level 1
- N2016 Pozo 3741, 3764.5 Level 2
- N2017 Sondco #13
- N2018 Sondco #14
- N2019 Sondco #15
- N2020 Sondco #16
- N2021 Sondco #17
- N2022 Sondco #18
- N2023 Sondco #19
- N2024 Sondco #20
- N2025 Sondco #21
- N2026 Sondco #22
- N2027 Sondco #22 Level 2
- N2028 Sondco #23

N	Sondco #	Notes
N 2029	Sondco #24	
N 2030	Sondco #25	
N 2031	Sondco #26	
N 2032	Sondco #27	
N 2033	Sondco #28	
N 2034	Sondco #29	
N 2035	Sondco #30	
N 2036	Sondco #31	
N 2037	Sondco #32	
N 2038	Sondco #33	
N 2039	Sondco #34	
N 2040	Sondco #35	
N 2041	Sondco #36	
N 2042	Sondco 37	
N 2043	Sondco 38	
N 2044	Sondco 39	
N 2045	Sondco 40	
N 2046	Sondco 41	
N 2047	Sondco 42	
N 2048	Sondco 43	
N 2049	Sondco 44	
N 2050	Sondco 45	
N 2051	Sondco 46	
N 2052	Sondco 47	
N 2053	Sondco 48	
N 2054	Sondco 49	
N 2055	Sondco 50	
N 2056	Sondco 51	
N 2057	Sondco 52	Level 1
N 2058	Sondco 53	
N 2059	Sondco 54	

7/17/13

dm QQ 2/1-1, Miguel has added a 3x3 to the west and continues Level 1 in that direction. He is locating a series of walls and finding interesting Postclassic artifacts

dm QQ 1/4, Justin continues his test unit. He is now in L 8, but all but the top levels are fill and even the top levels are not very revealing.

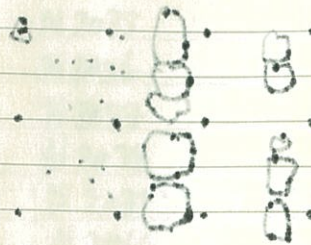


N
 QQ 2/1-1 ±

l

21/4/13

ad lupim 1-1/5 00 mls
how out of CXE a lalala
si 1 lupim rasidgas haw
pidard si of unificabil last
phid haw allow for since a
victoria vicabtoq pntentat



withm mital, 1/1 00 mls
what is it? this first cid
what did the find, 8.1
some haw 1/1, no davel yot
paw haw so davel yot

1-1/5 00

- 1-200
- 1-201
- 1-202
- 1-203
- 1-204
- 1-205
- 1-206
- 1-207
- 1-208
- 1-209
- 1-210

7/19/13

After a day in the lab, I am back in the field for more sun and fun. All continues from ~~there~~ Wednesday with little change except Adolfo has encountered a very nice plaster surface on the interior west bench of Str. QQ1/1-2. It is cracked, but well preserved. It may be a little thicker than the bench surface in other areas.

Note that I will ~~super~~ supervise a 1x1m excavation at 3740, 3764.5. See the last pages rather than the forms

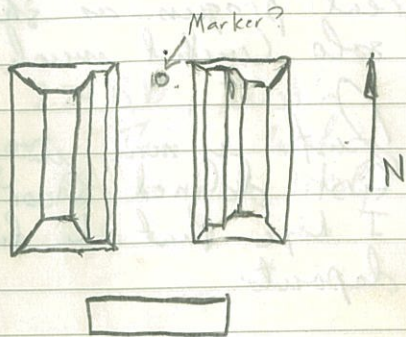
Str. QQ 2/1-1 appears to be a residential structure. We appear to be on the south side of the building (which seems to face to the east (toward the lower part of QQ 1/1)). Miguel is excavating an extra 3x6m area to the south (off of the structure), but we will also need to excavate to the north to uncover more of the bldg.

Both Elsa and Yessica (QQ 1/2 and QQ 1/3 respectively) continue to search for platform walls with little luck at this point.

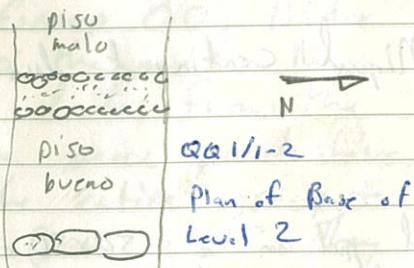
7/22/13

Back in the field on Monday with James.
I gave a brief tour to Prigant & Caralya
in the morning. We headed east to the
ballcourt to take a look.

There does appear to be
a marker of sorts on the
north side of the ballcourt.
It is vaguely circular and
fragmented (likely from
burning).



On QA 1/1-2, Adolfo has
the east edge of the
west arm of the structure.
Again, the floor is well
preserved on the interior
bench, but poorly preserved
on the exterior.



↓

2/11/13
I went to the ballcourt on Monday with James.
I gave a brief tour to Prigant & Caralya
in the morning. We headed east to the
ballcourt to take a look.
There does appear to be a marker of sorts
on the north side of the ballcourt. It is
vaguely circular and fragmented (likely from
burning).

On QA 1/1-2, Adolfo has the east edge of the
west arm of the structure. Again, the floor is
well preserved on the interior bench, but poorly
preserved on the exterior.

Plan of Base of Level 2
QA 1/1-2
piso malo
piso bueno

7/23/13

Evelyn finally found the south wall of the north bench. She will follow it to the structure floor. (in Str QQ 1/1-1). This is real progress as she will be able to excavate solo (with much help from me).

Justin is now in L13 (the fill below the first defined floor). He will continue on down. I hope that he finds us some good Preclassic deposits.

Miguel continued his extension in Str. QQ 2/1-1.

I put in a 50x50 cm (Sonde #11) to the south of QQ 1/1-4 (about 20m to the south of it). The unit encountered a moderate quantity of artifacts and a platform.

7/25/13

Back after a day in the lab. The lab day was not as productive as I would have liked, but I did manage to accomplish a few important tasks.

At the base of L18 at 2.24 BD, Justin found a burned plaster floor. This is likely a Preclassic period surface. It is also likely that this building was terminated.

I spent most of the morning surveying the southern part of Group QQ. After lunch we will begin to the north. Now that we can download data from the machine, our efforts are more productive.

I guess I will map the entire group +. We mapped two nails from 1995. They were located in QQ 1/1-1 at:

#	N	E	Z
	3721.813	3743.978	143.675

#	N	E	Z
	3719.001	3744.041	143.437

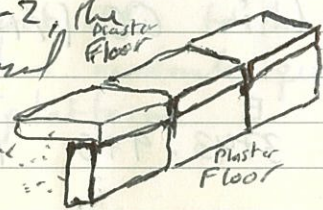
7/26/13

In QQ 1/1-1, in the area of the interior bench, Evelyn found a piece of coral. It is not a branch, but rather a big chunk from a larger mass.

XX chm QQ 2/1-1, Pozo 3695, 3677, level 1, Miguel found a lead ball. It is an ant size if it is a fishing weight or a musket ball. It could be the latter, but we have found a number of modern wire "brackets" for jewelry.

Justin is closing out today. He reached ca 2.27 BD, but did not hit bedrock. I will likely finish the test unit (we will see).

Note that in QQ 1/1-2, the bench edge is composed of ashlar, but it is laid flat on the top of the bench. These stones are all caliza. By bench, I mean western interior. It is possible ("possible" at this point) that a similar masonry is found near or in the exterior bench.



7/26/13

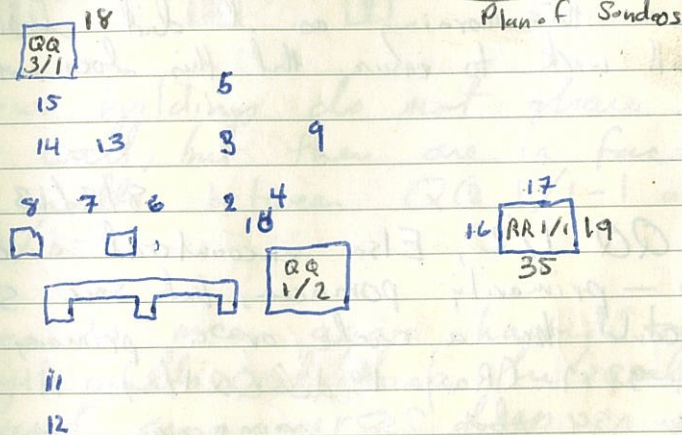
Evelyn continues to search for the bench edge. The building is different on this side of the structure.

7/29/13

Monday in the field with the inspector (Raphael Cambrano). I began by placing two additional sondes north of QQ 1/1.

We closed QQ 1/3. We have not found a wall and we are fairly deep. The further investigation is beyond the scope of this project. Jessica will now work in QQ 1/1-4.

Datum of QQ 1/1-4 : 139.106



7/30/13

Jessicas has moved to QQ 1/1-4.
She put a 3x3 on the SE corner of
the lower "big" arm.

8/2/13

Miguel encountered a nice concentration of
tiny sherds. It seems that some larger
sherds should have been flat and somehow smashed.
Maybe its a vessel, who knows.

8/1/13

After a day in the ~~lab~~ lab, I returned to
the field and went crazy yelling at poor Mike.
Romulo is still encouraging him to cause problems
and he admitted that he (Mike) was at stress
dealing with Romulo. I wish I had never
worked with that useless idiot. At any rate,
he won this morning as I did lose my cool.
I will work to ensure that this does not happen
again.

8/2/13

In QQ 1/2, Elsa encountered a cache of
shells - primarily pomacea, but some Strombus.
It could be a cache or a primary deposit.
In 3716, 3749 (Rasgo I de QQ 1/2). At present
we can see about 25 pomacea.

8/12/13

Back after a week of USA. I began
with a little mapping but the weather
was a little bad and the machine's
batteries died. I think got caught
up on the sondeos. There are 33
so far. I hope to test most
of Sector QQ, but we will see.

In QQ 1/1, Evelyn is finding that



the two buildings do not share a
joint wall, but there are in fact
two walls between QQ 1/1-1 and
QQ 1/1-2.

Jessica is once again having trouble
defining walls. I think the walls
are just one course deep in this
area. I expect that 1/1-4 is
actually Terminal Classic, but we will
let the sherds tell us.

We had to stop the excavation in QQ 1/4 (the 1x1 m test) at ca. 2.4 m bs because Darling could no longer effectively excavate. Recall that we reduced the excavation to the southern half of the unit after Level 19.

Miguel continues to excavate the residential structure (QQ 2/1-1). He is in level 2 and is finding large numbers of netweights.

Sondeo Survey

8/13/13

Sondeo	Point #	
#27	S032	
#28	S033	
#29	S034	
#30	S035	
#31	S036	
#34	S037	
#35	S038	
#36	S039	
#32	S043	6m east of shot
#33	S044	6m west of shot

dm 3741, 3764.5 (recall this is a 1x2) located about 10m NE of Str. QQ 1/1). We hit a very fragmented floor and excavated it and its ballast as L5. We hit another floor (better preserved) about 12cm below the first. We will call the second L6. Please note that I believe that we actually had

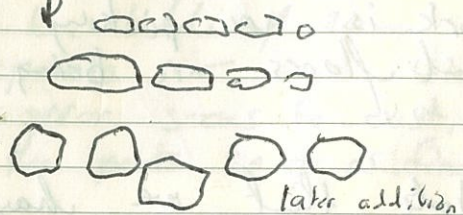
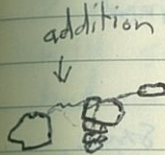
8/13/13

another surface at the base of L1 or it could simply be a light trash dump area with eroded soil.

dm QQ 1/1-4, Messica has finally figured it out. Her "nic" wall is hidden behind a poorly constructed addition.



This poorly constructed composed 3D is meant to depict



See the drawings and esp the photos.

8/15/13

I have been mapping in the northern portion of Sector RR so I did not take personal notes yesterday other than my sondeo brief.

Jessica has defined the east edge of QA 1/1-4 (at least an earlier version of this wall). It was later covered by another less well constructed addition. She will work to define this a day or so (maybe less) more then move to a new area.

QA 1/1 continues to be defined. Work is now picking up and the benches and floors are being better defined.

Note that we have reburied some discarded sherds (small & otherwise useless) in the base of Justin's test pit in QA 1/4. We also threw some random trash in the pit as a temporal marker.

In test unit

8/19/13

In QA 2/1, Miguel found piso and a concentration of pomacea similar to that found by Elsa in QA 1/2. The east edge of the concentration rested in unit 3694, 3677 (base of Level 2).

8/21/13

As is evident from my lack of personal notes, I have been mapping and supervising the excavation of my sondeos. Evelyn has taken care of the majority of the supervision of QA 1/1, QA 2/1 and an 1x2 m test. Today I am a little sick. I may have made a 20cm error in survey points - we will see. Yes that error seems to exist, but we re-surveyed the points so it is fine.

8/30/13

Most of my quick notes have been in the Sonder log (this book) or the survey notes for the past week.

At any rate, of particular note is possible red paint found toward the middle of QQ1/1-2 where Dayhi is working. The floor in this area is well preserved but has distortions from roots (I assume) and maybe some settling.

In QQ1/1-1, Evelyn continues to search for, well actually probe, the strange feature on the western bench. A portion of the bench was removed. It is possible that it is a burial.

Note that the masonry of QQ1/1-1 and QQ1/1-2 differs (particularly on the edge of the bench).



QQ1/1-2



QQ1/1-1

That of QQ1/1-1 is laid brick-like and that of QQ1/1-2 is set as large veneer stones (single course). Note that the builders of QQ1/1-2 were not aware of using the brick-like construction as they used it in their wall (supporting) construction.

I finished most of the mapping that I intended to do, but I wish I could have done more to the west of QQ. At any rate, the group is pretty much done, which is much more than my original goal - actually we mapped four sectors in this area + parts of other areas. In addition, we mapped Sector I (the ballcourt). Furthermore, mapping will continue after I leave. Adolfo and Dayhi are doing a nice job. At any rate, with the system that we have, it is hard to mess up.

Note that we have found quite a few figurine heads. They tend to be Late Classic ceramics, but seem to be curated or properly disposed of by Postclassic people.

I still have not numbered the buildings of Sector QQ. I will. It is just difficult to use this system until all of the results are in.

BTW... Further analysis of Sector XX (formally known as Str. 101 and 102) has clearly defined the presence of Ixkamik unstripped.

/// Sondro # 76 (Juan) 3680.74, 3789.73
N2086 137.302
50x50 cm
55 cm deep

0-9 (to 12)
9-55 fill of small to medium sized
limestones in a matrix of dark
gray brown soil

Sondro # 77 (Juan) 3680.57, 3776.15
N2087 137.232
50x50 cm
40 cm deep

0-10 humus
10-40 dark gray brown soil with
limestone inclusions and some small
limestones

Sondeo #78

N 2088

50x50 cm

40 cm deep

3718.84, 3557.98

143.90

0-10(11) cm of humus

11-26 ~~cm~~ of gray brown soil w limestone ^{inclusions}

26-40 cm of gray brown soil with small limestone (fill)

Sondeo #79

N 2089

50x50 cm

40 cm deep

3733.51, 3546.90

143.84

0-5 humus

5-35 dark gray brown soil w/ small to medium stones

35-40 gray brown soil with limestone inclusions

Sondeo #80

N 2090

50x50

3630.23, 3649.80

133.919

Location on the shoreline of ^{Sector} QQ. Evelyn will supervise.

Sondeo #19

3731.254, 3878.976

145.53

Lot: N 2023

50x50 cm

40 cm deep

Location: Lado este de Estr. RR 1/1.

After just a few centimeters, we encountered a fill of medium sized limestone, in a matrix of dark gray brown soil

Sondeo #81

N 2091

50x50 cm

3608.99, 3657.52

132.51

Location: on the shoreline of ^{Sector} QQ. Evelyn will supervise.

Sondeo #20 3737.551, 3891.156

145.293

Lotc: N2024

50x50 cm

40 cm deep

Location: 10 m al este de RR 1/1

Sondeo #21

3734.271, 3912.027

147.053

Lotc: N2025

50x50 cm

40 cm deep

Location: Lado oeste de RR 2/1

Sondeo #22 3732.206, 3948.296
Level 1 146.999
Lots: N2026
50x50 cm
0-1.9 cm

In this unit we encountered a plaster floor 19 cm BS. Therefore, it will change lots and call the floor out below Sondeo #22 Level 2. The material above the floor was a dark gray brown soil (humus and some collagen) soil.

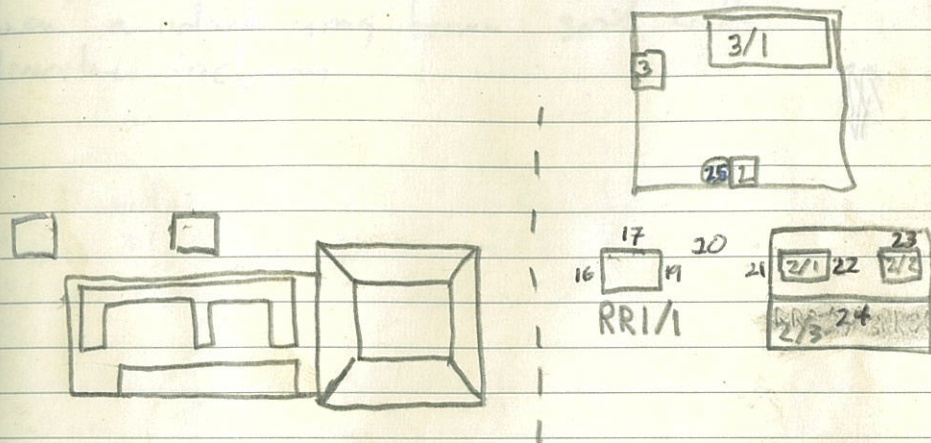
Sondeo #22 Level 2 Lot: N2027

This was a plaster floor and the soil beneath this floor. This level was a gray brown to light gray brown soil with small limestones topped by a plaster surface. The plaster was well preserved and about 2cm thick.

Sondeo #23 3732.716, 3943.958
147.441

Lots: N2028
50x50 cm
40 cm deep

This unit is on the east side of Str. RR 2/2. We encountered 8cm of humus followed by a fill of small to large limestone in a gray brown soil matrix.



Sondeo #24 3709.666, 3926.321

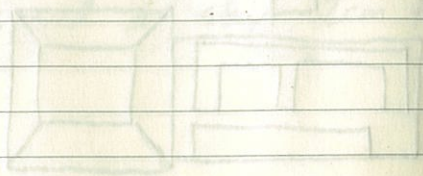
Loc: N 2029

140.753

50x50 cm

40 cm deep

I placed this sondeo to the south of Str. RR 2 (on RR 2/3). The purpose is to test for Postclassic on this lower terrace. This unit included a dark gray brown clay loam from the top to the bottom. I assume much of it is eroded soil from higher points of RR 2.



Sondeo #25

3767.222, 3890.498

146.421

Loc: N 2030

50x50 cm

40 cm deep

Location: West side of Str. RR 3/2

This unit included a high frequency of rock fill (smaller limestones) in a matrix of dark gray brown soil in the first 20 cm. So instead of fill, it is likely collapse from RR 3/2. The next 20 cm were a dark gray brown soil with limestone inclusions.

Sondeo #26

3693.887, 3910, 323
136.636

Lot: N2031
50 x 50 cm
40 cm
deep

Location: SW of RR 2/3. This sondeo encountered a dark gray brown soil from top to bottom. See notes of E Chan for more.

Sondeo #27

3766.285, 3855.54
145.65

Lot: N2032
50 x 50 cm
40 cm deep

Location: 7m west of the SW corner of RR 3

22 cm of humus (very dark gray brown clay loam) followed by small limestone in a matrix of gray brown soil (platform fill). Moderate quantities of artifacts.

Sondeo #28

3762.958, 3828.17

Lot: N2033

145.349

50 x 50 cm
40 cm deep

Location: 12 cm SE of the large mound in QQ
20 cm of humus followed by fill (small limestone in a matrix of gray brown soil).

Sondeo #29 3761.615, 3811.271
145.064

Lot: N2034

50 x 50 cm

40 cm deep

Location: 7 m south of the SE corner of the large mound in QA

23 cm of humus (dark gray brown clay loam) followed by 17 cm of fill (small limestone in a fill of gray brown soil)

Sondeo #30 3781.328, 3826.435

Lot: N2035

50 x 50 cm

40 cm deep

Location: 5 m east of the big mound in QA

Humus (dark gray brown clay loam) from top to bottom.

Sondeo #31 3799.271, 3821.52

Lot: N2036

146.005

50 x 50 cm

40 cm deep

Location: 3 m NE of the NE corner of the big QA mound.

20 cm of humus followed by 20 cm of fill (small limestone in a matrix of gray brown soil)

Sondeo #32

Lot: N2037

3817.53, 3812.57

50 x 50 cm

145.26

40 cm deep

9 m North of the big mound in QA

This sondeo contained no artifacts.

This was a very dark gray brown clay from top to bottom.

Sondeo #33

Lot: N 2038

50 x 50 cm

40 cm deep

Location: 10 m north of the NW corner of the ^{large} ~~structure~~

The first 10 cm was a dark gray brown soil (humus) followed by a gray brown soil with small limestone (likely fill). Low quantities of artifacts

3814.75, ~~3791.778~~
3796.88

145.215

Sondeo #34

Lot: N 2039

50 x 50 cm

40 cm deep

Location: SW corner of Str. RR 3/1 (not on the structure). 5-8 cm of humus followed by dense small-medium limestone in a matrix of dark gray brown soil.

3801.972, 3902.521

147.813

Sondeo #35

Lot: N 2040

50 x 50 cm

40 cm deep

Location: esquina SW de Estr. RR 1/1

10 cm de humus y 30 de relleno. High quantities of artifacts including numerous large pomacca.

3726.695, 3853.435

145.833

Sondeo #36

Lot: N 2041

50 x 50 cm

40 cm deep

Location: Roughly to center of RR 1/1. 10 cm of humus (very dark gray brown soil) followed by small to medium sized limestone in a dark gray brown matrix.

~~3726.695, 3853.435~~

~~145.833~~

3730.753, 3863.001

146.160

Sondeo #37

3735.698, 3817.763

Lote: N2042

145.163

50 X 50 cm

40 cm

Location 10 m north of the NE corner of QQ 1/2. After 10 cm of humus there was a fill of dark gray soil with small limestone

Sondeo #38

3797.75, 3860.76

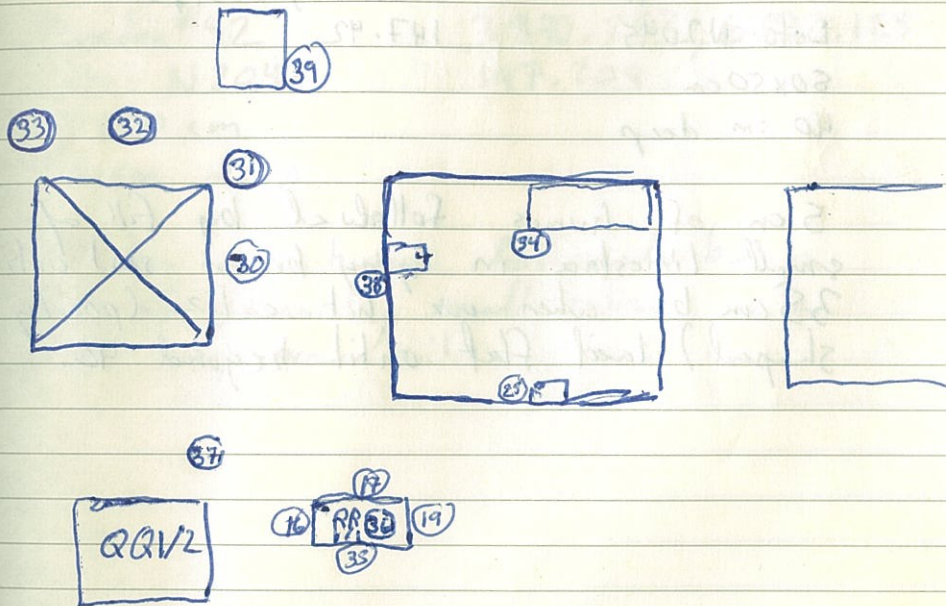
Lote: N2043

146.589

50 X 50 cm

40 cm

Location: West side of RR 3/3.
12 cm of humus followed by small stones in a gray brown soil.



Sondeo #39

3809.08, 3844.47

Lot: N2044

146.40

50x50 cm

40 cm deep

Location: eastside of QA

after 14 cm of humus we had a fill of small to medium limestone in dark gray brown soil.

Sondeo #40

3861.54, 3851.51

Lot: N2045

147.42

50x50 cm

40 cm deep

5 cm of humus followed by fill of small limestone in gray brown soil until 35 cm bs when we hit caliza (poorly shaped) laid flat until beyond 40.

Sondeo #41

3863.41, 3879.39

Lot: N2046

147.88

50x50 cm

40 cm deep

5 cm of humus followed by fill (small limestone in gray brown soil. While we had obsidian, there were few to no ceramics. (1 shard)

Sondeo #42

3840.253, 3882.125

Lot: N2047

147.209

50x50 cm

40 cm deep

10 cm of humus followed by a fill of primarily small caliza in a dark gray brown soil.

Sondeo #43

Lot: N2048

50x50 cm

40 cm deep

3898.497, 3876.525

148.609

3 cm of humus followed by small limestones in a dark gray brown soil. At 30 cm bs there was a light gray brown soil with few stones. (so there were 3 levels here).

Sondeo #44

Lot: N2049

50x50 cm

40 cm deep

3864.402, 3808.829

147.698

After 8 cm of humus we had collapse / fill until the base of the pit. The collapse was a dark gray brown soil with small to medium limestones.

Sondeo #45

Lot: N2050

50x50 cm

40 cm deep

3919.899, 3861.747

148.089

After 10 cm of humus, we had a dark gray brown soil with small limestones (collapse / fill).

Sondeo #46

Lot: N2051

50x50 cm

40 cm deep

Location: See coordinates (on top of a yet unnamed mound).

3845.66, 3929.837

150.08

Very little humus (2cm) followed by 18 cm of dark gray brown soil with small limestone followed by tan brown soil with small limestones.

Sondeo #47

N 2052

50x50

40 cm deep

3831.0 + 2, 3854.534

~~3854.534~~, ~~3831.~~
147.023

5 cm of humus followed by 20 of dark gray brown soil with small limestones followed by 15 of tan brown soil.

Sondeo #48

N 2053

50x50

40 cm deep

3830.578, 3727.971

145.627

13^{cm} of humus followed by very dark gray brown soil with small limestones until 33cm bs when we hit a tan brown with limestone inclusions

Sondeo #49

N 2054

50x50 cm

40 cm deep

(Ronald)
3852.76

~~3852.76~~, 3783.814

147.40

6 cm of humus followed by 20 of dark gray brown soil with small limestones followed by tan brown soil with limestone inclusions

Sondeo #50

(Santiago)

N 2055

50x50 cm

40 cm deep

3800.52, 3759.52

145.00

After 10 cm of humus, we had 20 cm of dark brown soil with limestone inclusions (and small limestones) followed by 10 cm of gray brown soil with limestone inclusions

Sondeo #51 (Juan)
N2056 3818.189, 3760.543
50x50 cm 144.719
40 cm deep

Very dark gray brown clay all the way down (with some limestone inclusions). This is in the low area at the cross roads of the drains.

Sondeo #52 (Jose)
N2057 and N2060 3867.73, 3758.41
50x50 cm 147.70
40 cm deep

After 16 cm of humus we hit a nice (but packed) plaster floor. We called this material (above) Level 1. Level 2 included the floor (5 cm thick), then 10 cm of dark gray brown soil with small limestones followed by a tan brown soil with limestone inclusions.

Sondeo #53 (Ronald)
N2058 3898.14, 3787.79
50x50 cm 147.93
40 cm deep

8 cm of humus followed by 12 cm small cm of dark gray brown soil with limestone followed by 20 cm of tan brown soil with limestone inclusions

Sondeo #54 (Santiago)
N2059 3814.63, 3666.91
50x50 cm 145.92
40 cm deep

10 cm of humus followed by dark gray brown soil with small to medium limestones.

Sondeo #55

(Juan)

Loc: N 2061 3788.18, 3718.04
 50x50 cm 145.474

40 cm

20 cm of very dark gray brown soil
 followed by 20 of tan brown soil with
 limestone inclusions

Sondeo #56

(Jose)

Loc: N 2062 3785.67, 3743.96
 50x50 cm 144.79

40 cm

9 cm of humus followed by 22 of
 dark gray brown soil with small limestone
 followed by tan brown soil with limestone
 inclusions.

Loc

Context

N 2060	Sondeo 52 Level 2
N 2061	Sondeo 55
N 2062	Sondeo 56
N 2063	Sondeo 57
W 2064	Sondeo 58
N 2065	Sondeo 59
W 2066	Sondeo 60
N 2067	Sondeo 61
N 2068	Sondeo 62
N 2069	Sondeo 63
W 2070	Sondeo 64
N 2071	Sondeo 65
N 2072	Sondeo 66
N 2073	Sondeo 67
N 2074	Sondeo 68
N 2075	Sondeo 69
W 2076	Sondeo 70
N 2077	Sondeo 71
N 2078	Sondeo 72
N 2079	Sondeo 73
W 2080	Sondeo 74
N 2081	4270.4, 3833.3 Level 1
N 2082	4270.4, 3833.3 Level 2
N 2083	4270.4, 3833.3 Level 3
N 2084	4270.4, 3833.3 Level 4
N 2085	Sondeo 75
W 2086	Sondeo 76
W 2087	Sondeo 77
N 2088	Sondeo 78
N 2089	Sondeo 79
N 2090	Sondeo 80
N 2091	Sondeo 81

Sondeo # 57 3678.65, 3730.95
N2063 136.70
50x50cm
40 cm deep

In the first 20 cm, we had a massive amount of refuse (for a unit so small). The ~~four~~ upper 20 cm was a very dark gray brown loamy clay. The next 20 cm was a very dark gray brown clay with large limestone. Trash dump area.

3646.82, 3693.55, 135.09

Sondeo # 58 (Rondel) N2064
After just 8 cm we hit ^{very} large stone fill. We were able to ~~do~~ excavate to 30 cm b_s in the cracks but most was occupied by stones.

50x50 cm
~~at~~ 30? deep

Sondeo # 59 (Jose) 3682.998
N2065 3619.717
15 cm of ^{soft} gray brown soil 141.165
followed by 25 cm of ^{soft} gray brown soil
with small to medium limestone

Sondeo # 60 (Juan) 3694.696
N2066 3639.984
50x50cm 141.325
40 cm deep
18 cm of gray brown soil followed
by 22 cm of gray brown soil with
small limestones

Sondeo #61 (Ronald) 3652.794
N 2067 3645.704
135.42

We had to fill before I measured this but it was roughly 20 cm of humus and 20 of fill (do not use for reconstructing the landscaped though). This was a trash dump area. Several rather large shreds were found.

Sondeo #62 (Santi) 3679.85, 3749.38
N 2068 136.98
50x50 cm
40 cm deep

Location: 20 m sur del lado este de Q0111. 25 cm of v. dark gray brown soil followed by dark gray brown soil with small pieces. Trash dump area - largest amount of refuse so far.

Sondeo #63 Baño 3726.19, 3671.10
140.569
50x50 cm
50 cm deep

Sondeo #64 3823.603
N 2070 4277.939, ~~3823.603~~
147.35
50x50
40 cm deep

Location: ~~the~~ NW portion of the northern edge of the southern building of the ballcourt
10 cm of humus,
15 cm of dark gray brown with limestone
15 cm of tan brown soil with small limestone

Sondeo # 65 4276.43, 3838.05
Late: N 2071 147.265

Location: NE portion of the northern edge
of the southern building of the ball
court.

10 cm of humus, 10 cm of dark gray
brown soil with limestone inclusions and
20 of tan brown soil with small to
medium limestones

Unit 4270.36, 3833.31
Z = 148.24

1x1m unit excavated in levels

Located on top of the south structure of
the ballcourt.

Level 1 (Late N 2081) Very dark gray
brown soil with small limestones. 0-17 cm bs.
Moderate quantities of artifacts

Level 2 (Late N 2082) 17-35 cm bs
~~Dark~~ Gray brown soil with small limestones.
Fill.

Unit 4270.4, 3833.3 summation

The unit achieves its purpose which was
to excavate fill. Hopefully, it will date
the structure, but it is possible that we
could get a late Preclassic TPO on a
Terminal Classic period construction. We saw
this at Tazasal. At any rate, the sherds
still need to be washed and analyzed, then
they will speak.

Level 3 (Late N 2083) 35-49 cm bs
Light gray brown with small limestones.
We ended ~~at~~ this fill layer we hit hit
a few fragments of plaster floor still lying
in their position. Note: if this is a floor it
is very fragmental. Fill

Level 4 (Late N 2084) 49-61 cm bs
Gray soil with limestone inclusions and
small limestones. It is fill like Levels
2-3. We ended arbitrarily (out of time).
at 61 bs.

Sondeo #66 Jose 4298.82, 3804.81
N2072 148.30

50x50 cm
55 ~~40~~ cm deep

Between south structure and western body
5 cm of humus
10 cm of dark gray brown with limestone incl
25 cm of gray brown with small ^{med} limestone
15 of gray brown with limestone inclusion
At 55 cm bs we hit a gray soil
with limestone inclusions.
** Very few artifacts

Sondeo #67 Ronald 4287.45, 3851.89
N2073 146.12

50x50 cm
50 cm deep

Between south structure and eastern body.

Note that we excavated to 50 cm bs
as there were few artifacts
8 of humus
10 of dark gray brown with limestone inclusions
12 of gray brown with small limestone
13 of gray brown with limestone inclusion
At about 49 cm bs we hit a layer of
caliza (could be a floor or caliza fill)
** Very few artifacts

Sondeo #68 Jose 4328.279, 3887.269
N2074 Ronald 145.936

50x50 cm
60-50 deep

Location: 10 m east of the east body
50 cm of clay with some pulverized
limestone. This material was sterile.
** No artifacts **

Sondeo #69 Jose 4391.065, 3844.935
N2075 147.237

50x50 cm
0-50 deep

Location: On top of the east side
of the north structure
8 of humus

8-25 very dark gray brown w/ limestone inclusions
25-40 dark gray brown with small limestone
40-50 gray brown soil with limestone inclusions

Sondeo 70 (Ronald) 4348.17, 3896.40
145.765
N 2076 50x50 cm 50 cm deep
75 m east of east body of the ballcourt

0-10 humus

10-30 dark gray brown soil with limestone incl

30-50 gray brown soil with limestone incl

Moderate quantities of artifacts - a possible trash deposit.

Sondeo 71 (Jon) 4390.90, 3882.46
N 2077 145.197
30 m north of the NE corner of the east body of the ballcourt

0-15 humus

15-35 gray brown soil with small limestone

35-50 gray brown soil with limestone inclusions

Sondeo # 72 José 4316.02, 3755.41
147.545

N 2078

50x50 cm

0-60

on ~~both~~ ^{sides} of low structure to the west of the west ballcourt structure

0-10 humus

10-40 gray brown soil with small limestone

40-60 gray brown soil with sand to medium limestone

Few ceramics (though more than #73, possibly due to the extra 10 cm).

Sondeo # 73 Ronald 4310.93, 3765.69
N 2079 147.707

50x50 cm

0-50

on ~~both~~ ^{south} side of low structure to the west of the west ballcourt structure

0-10 Humus (dark gray brown)

10-50 yellow (small to medium stones in gray brown soil)

Few ceramics were found (largely due to very little fill).

Yes... today lots of mosquitos de caballos!

Sondeo # 74 (ronal) 4304.92, 3828.15

N2080 146.98

0-32 very dark gray brown eroded soil

32-50 ~~gray~~ gray brown soil with ^{small} limestone

57129401 don't know
whose # this is

There were very few artifacts in Sondeo #74.

Sondeo #75 (Jose) 4343.92, 3832.94

N2085

147.52

0-51 cm deep

0-16 very dark gray brown eroded soil

16-51 gray brown soil with small limestone

Few artifacts were found in #75.

Sondeo #1

Lotc: N32

This was the excavation for the bathroom.

It was also a 50x50 cm unit. See the general notes and those of Evelyn for details. The excavation was 54 cm deep.

Location of NE corner 3741.5, 3670.5

It was not meant for the excavation but it contained ceramics, chert, obsidian, animal bone, and shell.

Sondeo #2

3741.28, 3761.688

143.606

Lotc: N2000

50x50 cm

40 cm deep

Located ca. 20 m north of the north east corner of Str. QQ 1/1-1.

No visible stratigraphy was encountered. It was all a very dark gray brown clay loam (with the exception of the root mat). This soil was good and may represent eroded soil. On the other hand recovered artifacts tended to be recovered between 15-30 cm BS. Artifacts included Paucayan tripod plates, & grade bowl sherds, relatively high frequency of pomacea, chert, animal bone, and one piece of obsidian. Note that we also found a deer head appique similar to that found in Str. 183 of the 1995 excavations (which I have not renamed yet).

3751.1178, 38.1118

111.111

#2 sondes

lots: N 2001

50x50 cm

40 cm deep

located ca. 40 m north of the NE corner of Structure QQ 1/1-1.

The first 25 cm was a very dark gray brown clay loam. The next 15 cm was a gray brown soil with medium sized limestone (platform fill). The artifact frequency was lower than in Sonda #2 but we still had a moderate frequency of artifacts.

Sonda #3

3762.246, 3759.979

143.966

lots: N 2001

50x50 cm

40 cm deep

located ca. 40 m north of the NE corner of Structure QQ 1/1-1.

The first 25 cm was a very dark gray brown clay loam. The next 15 cm was a gray brown soil with medium sized limestone (platform fill). The artifact frequency was lower than in Sonda #2 but we still had a moderate frequency of artifacts.

3747.400, 3781.725

143.943

Sondeo #4

Lote: N 2002

50x50 cm

40 cm deep

Located about 30m north of the NW corner of Str. QQ 1/2. The entire excavation was a very dark gray brown clay loam. We recovered a moderate amount of ceramics and shell.

1005H total
no 02x02
grab no 01
located on the north of the NW corner of Str. QQ 1/2

The first 10 cm was a very dark gray brown clay loam with the next 10 cm was a gray brown soil with medium sized limestone (plate) (11) the artifacts recovered were from the sondeo #4 but we still had a moderate amount of artifacts

3778.898, 3760.259

144.462

Lot: W2003

50x50 cm

40 cm deep

located 60m north of the NE corner of Str. QA 1/1-1. This unit had 16cm of very dark gray brown clay loam followed

3778.898, 3760.259

144.462

Lot: W2003

50x50 cm

40 cm deep

located 60m north of the NE corner of Str. QA 1/1-1. This unit had 16cm of very dark gray brown clay loam followed

725.0158 7898.7778

2# 022002

800812002

no 02x02

40 cm deep

to narrow fill at the base of the wall had fine silt. i-iv 00.02
of red dark brown clay loam
low/med

Sondeo #6

3741.56, 3743.335

143.201

Lotc: N2004

50x50 cm

40 cm deep

Location: 20 m north of the mid wall of
QQ 1/1. The unit only encountered a
layer of very dark brown clay loam. Artificial
frequencies were low/moderate.

3713.332, 3711.22, 3711.22
105.841

2# sondos
Hocst: 1500
no 02202
40 cm deep

Now here at 70 ft ...
distance also ...
pale ...
...

Sondos #7 3742.938, 3723.692
142.716

Lot: N2005
50x50 cm unit
40 cm deep

Location: 20 m north of middle of
Structure QA 1/1-2.

The unit contained 25 cm of a very
dark gray brown loamy clay followed
by a gray brown fill with small to
medium sized caliza.

~~1/1-2~~ #

3742.159, 3705.259
142.098

#8

20050
10000
10000

Location: 10 m al norte de estr. QAI/4

The excavation only encountered
a very dark gray brown clay loam.
Artifact frequencies were low to moderate.

\$ / 1000
- 2000

Sondeo #8

3742.159, 3705.259
142.098

Loc: N2006
50x50cm unit
40 cm deep

Location: 10 m al norte de estr. QAI/4
~~excavation~~ The excavation only encountered
a very dark gray brown clay loam.
Artifact frequencies were low to moderate.

22.2058, 221.5858
144.056

#8 sondes

Lot: N 2007
50x50 cm
40 cm profunde

Location: 40 m al norte de Estr. QQ 1/2.
This excavation encountered only a dark
gray brown clay loam with small limestone
inclusions.

Sondes #9

3762.093, 3779.012

144.056

Lot: N 2007
50x50 cm
40 cm profunde

Location: 40 m al norte de Estr. QQ 1/2.

This excavation encountered only a dark
gray brown clay loam with small limestone
inclusions.

SIO.PFFF, CPO.SJFE
P# 220.441

Foot VI total
20x20 cm
about 100 cm

Location: 10 m al nor oeste de Estr. QD 1/2

The excavation was about 100 cm deep
and the soil was very hard
and the soil was very hard
and the soil was very hard

Sondeo #18 3735.124, 3777.693
143.722

Lot: N2008
50x50 cm
40 cm deep

Location: 10 m al nor oeste de Estr. QD 1/2

Lot: N2009
82-1.03
Dark grey brown claystone with white specks
We quickly observed that it was different
from the other 2 samples of yellowish
color. The size of the grains of quartz
was much smaller than the other two.

Pozo 3740, 3764.5

Because we found a great deal of refuse in Sondco #2, I put in a 1x1 ca. 25 cm east of this sondco. The northeast corner is located at 144.345. I hope to find more refuse in this area and will expand the unit if warranted.

Level 1

Lotc: N2009

.68 BD - .82

~~Dark~~ Dark Gray Brown Clay Loam (Humus)

We finally got moving on Level 1 on 7/22/13. I hope that we got some good refuse from this area. In Level 1, we had low to moderate frequencies of sherds, chert, shell, & obsidian as well as some animal bone. We arbitrarily ended the level when artifact frequencies increased just slightly (otherwise the soil is the same).

Level 2

Lotc: N2010

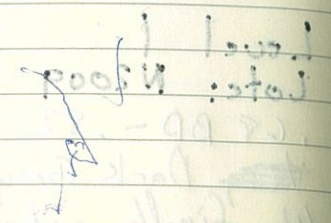
.82 - 1.03

Dark Gray Brown Clay Loam with caliza specks

We quickly observed that L2 was different from L1 as L2 includes specks of pulverized caliza. The size of sherds, frequency of obsidian, as well as animal bone, has increased dramatically.

3740, 3764.5

... to look for a hand ...
... of the ...
... of the ...
... of the ...
... of the ...



Pozo 3739, 3764.5

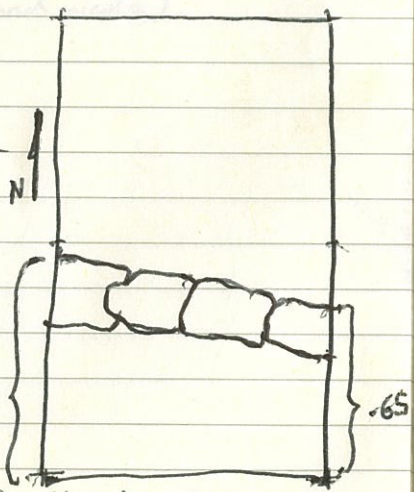
I added a 1x1m extension south of 3740, 3764.5.
We will search for more refuse in this area. I
will likely excavate just two or three levels in this area.

Level 1
Late: N2012
.69- .78

Humus: dark gray brown clay loam.
This area had a moderate amount of ceramics,
and lithics. Of note is an odd figurine
(whistle sherd?) depicting a sketched head
(or maybe a distorted primate). We ended
when we hit the same flaked soil that
we found in 3740, 3764.5

Level 2
Late N2014 .78-1.02 BD

It seems that they removed
a low informal platform in
L2 of the excavation. I believe
that the platform stood in N1
this unit as opposed to
3740, 3764.5. This platform is odd
as it is shallow and did not
appear as a rise on the
surface. As a matter of
fact, it is slightly low.



We will not excavate in this unit for the time being.

Pozo 3741, 3764.5 3676.594, 3715.884,

We extended one more 1x1 to the north since we did not get our refuse in 3739, 3764.5 (we found a platform instead)

Level 1

late: N2015

.68 - .79

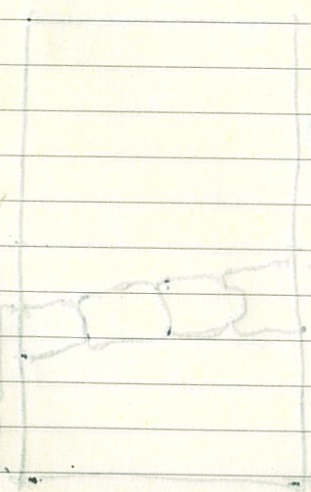
Following the same script, this is a nice dark gray brown ~~soil~~^{clay loam} (humus). Artifact frequencies were low. We closed out on the typical dark gray brown soil with flecks of caliza.

Level 2

late: N2016

.79 - 1.02

As noted this is a dark gray brown clay loam with specks of caliza. It also includes some ~~of~~ small limestones (caliza and piedra).



Sondeo #11

3676.547, 3715.884,
136.547

Loc: N 2011
50 x 50 cm
40 cm deep

~~Loc~~ Location: Ca. 20 m sur del "brazo"
oeste de la plataforma (QQ 1/1-4).
Note that there appears to be a low
structure in this area and the test was
placed to the south of this structure.
The sondeo produced a moderate quantity of
ceramics, obsidian, etc. There was at least
one tripod foot with a modeled base. The
first 20 cm was a dark gray brown
humus followed by gray brown fill

Sondeo #12

3665.267, 3715.738
135.579

Lot: N2013

50 x 50 cm

40 cm deep

1105 U : 2013

no 02 x 02

quad no 01

Location: Ca. 30 m south of the west margin
of the platform (Q01/114). We could
not record the stratigraphy because
the grain for each level was too fine.
So that the cows did not injure themselves
in the unit. In addition, we could not
screen the soil as it had turned into mud.
We "screened" it by eye with a sifter.

2500
272178 FJS: 2008
PF2: 281

Sondeo #13

~~3764.642~~ 6

3764.642, 3740.672
144.013

Lotc: N 2017
50x50 cm
40 cm deep

Location: 30 m norte de QQ 1/3. Just as in Sondeo #14, we had 20 cm of humus followed by a pavement of small limestones in a dark gray brown soil matrix. The difference between #13 and #14 is that the small limestones in a soil matrix was only 10 cm deep in Sondeo #13 (followed by a gray brown soil).

2499

Sondeo #14

3764.673, 3720.996
144.316

~~N 2018~~ Lotc: N 2018
50x50 cm
40 cm deep

Location 40 cm norte de QQ 1/1-2.

Humus (dark gray brown clay loam) extended 20 cm BS and we hit a pavement of small (6-12cm) limestones. The limestones in soil still continued to the base (40 cm BS) of the excavation.

3776.968, ~~3776.968~~
3721.211
3776.968, ~~3776.968~~
145.286
N 2019
50 x 50 cm
40 cm deep

Location: On the south side of Structure
QQ 3/1. After 12 cm of humus
we encountered a nice fill of small
limestones in a matrix of very dark
gray brown soil. There were some nice
paxcaman red shales including a
tripod foot in this sondco.

Sondco #15

3776.968, ~~3776.968~~
3721.211
145.286

Lot: N2019
50 x 50 cm
40 cm deep

Location: On the south side of Structure
QQ 3/1. After 12 cm of humus
we encountered a nice fill of small
limestones in a matrix of very dark
gray brown soil. There were some nice
paxcaman red shales including a
tripod foot in this sondco.

21H 02002

Lot: N 2020
50x50 cm
40 cm deep

Sondeo #16

3731.128, 3849.365
145.727

Lot: N 2020
50x50 cm
40 cm deep

Location:

On the west side of Str. ~~RR~~ RR 1/1.
In this unit, we had 10 cm of lenses
followed by small limestones in a
dark gray brown matrix.

Sondeo #18

Lot: N 2022

50 x 50 cm

40 cm deep

3796.657, 3728.995

145.485

0.505 m : 10.1

no 02 x 02

prob no 04

Location: On the northeast corner of
QQ 3/1. After 10 cm of humus we
excavated a very dark gray brown
clay loam with specks of caliza.

Sondeo #17

3736.014, 3860.845

146.174

Lot: N 2021

50 x 50 cm

40 cm deep

Location: On the north side of ~~QQ 3/1~~ RR 1/1
after just 8 cm of humus, we encountered
a fill of medium sized (20^{wide} cm) limestones
in a matrix of gray brown to dark
gray brown soils. Post classic sherds have
higher relative frequencies in this area. Note
that the larger stones reduce the soil mass
and therefore the artifact content.

Recent work at Nixon, Chick & Taysal

Pro ✓ +
 Tim ✓
 Kati I ✓ +
 Wati ✓ +
 Kati II ✓ +
 Chant ✓ +
 Yoko ✓ +
 Christina ✓ +
 Caroline ✓ +
 Leslie ✓ +
 Justin ✓ +
 Rach ✓ +
 (Alan Chene)

PTOF PPLS
 72508FF8
 P2030803

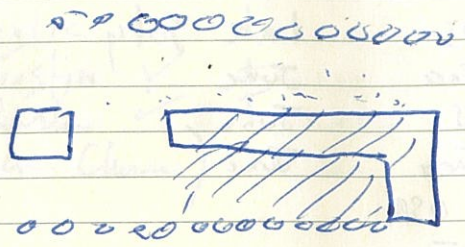
Flights

Raquel US late July
 Raquel Taca June
 Justin US No
 Justin Taca No
 Dominique US late July
 Dominique Taca June
 Pugh 5/29 US June
 Pugh 5/29 Taca June
 Pugh 8/10 USA
 Pugh 8/10 Taca
 Pugh 6/29 Taca July

Vergara 6/14 BUS (one way)
 Vergara 6/28 June
 Vergara 7/12 July
 Vergara 7/26
 Vergara
 Vergara 8/21

Controlled until Aug 14

Ramon Roberto Chota Munoz 31997619
 Luis Gonzalez Vasquez 57786254
 Hanmy Wilfredo Franco 50565659



(Jessica Darling)
 (Evelyn Miguel Elsa Sherry)
 {Daby Adolfo ~~Darling~~ Roberto

50001 \$000 700
 10 2 0

QQZ/1

Handwritten notes and scribbles, including some faint numbers and lines.

Handwritten notes and scribbles, including a circled number '3' and some illegible text.

Money

WS-108243-6um8 28/8

Raquel	Sat. 15	1000	500	200	32	1480
Dominiquez	Sat 15	1000	1000	200	290	2780
Justin			25 days		28	370
Carolyn		+1400				1000
						2420

Evelyn	! 500	Raquel	Adonis
Elsa		Dominiquez	Santiago
Wilfredo			
Adolfo	2, 3, 5 (1.5m 200m W), 9, 11, 10		
Darling	6, 7, 8		
Pablo		204	14
Miguel +		180	40
Roberto		24	14
Sheli lab			
Julio?			
Yessica			

La unico que ~~me~~ lamento es que...

③

Elsa	Wilfredo	
Jessica	LW	140
Adolfo	LW	30
Darling	LW	34200
Justin	LW	2500
Evelyn	Dary Raquel Daniel Robert LW	1700
Miguel	LW	Justin

LW

Justin +3500

2092

Carolyn +3000

- hotel

292 59.14

180
112. 5914

Sunday 7/27 activities

find mac home

Jenny Guerra

5201 7312

275' 28' 52.22
180
148 5222

2500 1 m east